

AKIYO

Fitment Handbook



Alf Technologies (India) Pvt. Ltd.

AKIYO Battery

AlfTechnologies (India) Ltd. With the brand name “AKIYO” is a closely held limited company head quartered in Ahmedabad. The Company is into contract manufacturing and marketing of a wide range of lead-acid batteries on a pan-India level.

The company was incorporated in the year 2010 with a long-term vision of becoming the most respectable and preferred brands in India for lead acid batteries.

The Product Series includes lead acid batteries for car/four wheeler application, tractor and agro-equipment application, Truck and HCV application, Invertors, UPS, Solar and Other Stand-by Power Application and lastly for the motorcycle applications.

The company and its brands have received tremendous response in the last 7 years has successful built on a strong Sales and Service Channel Network of over 3500 Dealers across India.

The Company is a member of the Prestigious Battery Council International, USA (BCI) that is an apex body of association of the top 50 battery manufacturers of the world. The company is also a member of the Confederation of Indian Industry (CII) and the Society of Automobile Engineers (SAE).

Apart from this the Company is also the India Marketing and Distribution Partner for complete range of “Hitachi” Automotive Batteries.

We are Members of



HITACHI Battery

About Hitachi Chemical

Hitachi Chemical Co., Ltd. established in 1962 is a subsidiary of the US\$ 96 Billion Multi- National Hitachi Ltd. head quartered in Tokyo, Japan, Since then, the Company has continuously worked to expand its field of operations, developing innovative technologies and new markets as a chemical manufacturer engaged in a wide range of areas, including Functional Materials Segment and Advanced Components and Systems Segment. Today the Hitachi Chemical Co. Ltd. has employs more than 18000 people worldwide and has revenues of more than US\$ 4 Billion Annually. Hitachi Group Ranks 38th in the Fortune Global 500 Companies.

Hitachi Automotive Batteries

The Hitachi Automotive batteries have been in the market for more than 10 years now. The Hitachi Group Took over the Shin Kobe Group, Japan Which is one of the important players in the lead acid batteries segment in the year 2012. Since then the automotive battery division has come a long way. Hitachi has currently 2 plants for lead acid battery production, namely Japan and Thailand. The Thailand Facility is one of the most advanced automatic production facility which is into manufacturing of Automotive Batteries and has several OEM Customers like Mitsubishi, Toyota and Nissan.

The Hitachi Thailand Plant has been awarded “Excellence in Zero Defect” consecutively for 2 years by Mitsubishi Motors. The Plant is ISO 9001, 14001 and TS16949 Certified with installed capacity of more than 1 Million Units per annum.

Certifications



ISO 9001:2008



ISO 14001:2004



TS 16949:2009



Excellence in Zero Defect

AKIYO Battery Products

- **Cars and Light Commercial Vehicles**
Sealed Maintenance Free (SMF - JIS)
Sealed Maintenance Free (SMF - DIN)
- **Heavy Duty Vehicles**
Super Heavy Duty (JIS - CV)
Heavy Duty (JIS - TRCT)
- **Two Wheeler Vehicles**



Rider Series



Classic Series



Prime Series



Dura Series

HITACHI Battery Products

- **HS Series**
- **HP Series**
- **DIN Series**
- **CV Series**



HS Series



HP Series



DIN Series



CV Series



FITMENT CHART - 2 Wheeler /// BIKES + SCOOTERS

NAME OF MANUFACTURER	VEHICLE MODEL	FUEL	AKIYO PART NO.	HITACHI PART NO.
Bajaj Motorcycles / Bajaj Auto Limited	Aspire	Kick Start	MC 2.5	-
	Avenger 150 Street	Electric Start	MC 9	-
	Avenger 200	Electric Start	MC 9	-
	Avenger 220 Cruise	Electric Start	MC 9	-
	Avenger 220 DTS-Si	Electric Start	MC 9	-
	Avenger 220 Street	Electric Start	MC 9	-
	Avenger Cruise	Electric Start	MC 9	-
	Bajaj V (V12 / V15)	Electric Start	MCZ 5	-
	BM 125	Electric Start	MC 5	-
	Boxer (AT / CT / 4S)	Kick Start	MC 2.5	-
	Boxer 125	Kick Start	MC 2.5	-
	Bravo DC	Kick Start	MC 2.5	-
	Byke	Kick Start	MC 2.5	-
	Caliber 115	Kick Start	MC 2.5	-
	Caliber Croma	Kick Start	MC 2.5	-
	Caliber K-TEC	Kick Start	MC 2.5	-
	Challenger	Kick Start	MC 2.5	-
	Champion	Kick Start	MC 2.5	-
	Champion 4S	Kick Start	MC 2.5	-
	CT 100	Kick Start	MC 2.5	-
	Disco H	Electric Start	MC 5	-
	Disco M	Electric Start	MC 5	-
	Discover 100 M	Electric Start	MC 5	-
	Discover 110	Kick Start	MC 2.5	-
	Discover 125 M	Electric Start	MC 5	-
	Discover 125 M	Kick Start	MC 2.5	-
	Discover 135	Kick Start	MC 2.5	-
	Discover 135 DTS-Si	Electric Start	MC 5	-
	Discover 135 LS	Electric Start	MC 5	-
	Discover 150	Electric Start	MC 7	-
	Discover 150	Kick Start	MC 7	-
	Discover 150F (New)	Electric Start	MC 5	-



FITMENT CHART - 2 Wheeler /// BIKES + SCOOTERS

NAME OF MANUFACTURER	VEHICLE MODEL	FUEL	AKIYO PART NO.	HITACHI PART NO.
Bajaj Motorcycles / Bajaj Auto Limited	Discover H	Electric Start	MC 7	-
	Discover H	Kick Start	MC 2.5	-
	Discover M	Electric Start	MC 7	-
	Discover M	Kick Start	MC 2.5	-
	Discover M	Kick Start	MC 7	-
	Discover T	Electric Start	MC 5	-
	Dominar 400	Electric Start	MC 9	-
	Eliminator	Electric Start	MC 9	-
	KB 125 / KB 4S	Kick Start	MC 2.5	-
	Kristal	Electric Start	MC 5	-
	Ninja 300	Electric Start	MC 9	-
	Ninja 650R	Electric Start	MC 9	-
	Platina 100	Kick Start	MC 2.5	-
	Platina 125	Electric Start	MC 5	-
	Platina 125	Electric Start	MCZ 4	-
	Platina Comfortec	Electric Start	MC 5	-
	Platina DTS-Si	Kick Start	MC 2.5	-
	Pulsar 125	Electric Start	MC 5	-
	Pulsar 135 LS	Electric Start	MC 5	-
	Pulsar 150	Electric Start	MC 7	-
	Pulsar 160	Electric Start	MC 7	-
	Pulsar 180	Electric Start	MC 9	-
	Pulsar 220	Electric Start	MC 9	-
	Pulsar 220 DTS-Si	Electric Start	MC 9	-
	Pulsar 220 F	Electric Start	MC 9	-
	Pulsar AS 150	Electric Start	MC 7	-
	Pulsar AS 150	Electric Start	MC 9	-
	Pulsar AS 200	Electric Start	MC 9	-
	Pulsar NS 200	Electric Start	MC 9	-
	Pulsar RS 200	Electric Start	MC 9	-
	Saffire	Electric Start	MC 5	-
	Spirit	Electric Start	MC 5	-



FITMENT CHART - 2 Wheeler /// BIKES + SCOOTERS

NAME OF MANUFACTURER	VEHICLE MODEL	FUEL	AKIYO PART NO.	HITACHI PART NO.
Bajaj Motorcycles / Bajaj Auto Limited	Wave	Electric Start	MC 5	-
	Wind 125	Kick Start	MC 2.5	-
	XCD 125 DTS-Si	Electric Start	MC 5	-
	XCD 135 DTS-Si	Electric Start	MC 5	-
Hero Motor Corp Ltd. - HMCL (Previously known as Hero Honda)	Achiever (New)	Electric Start	MC 7	-
	Achiever (Old)	Electric Start	MC 5	-
	Achiever (Old)	Electric Start	MC 7	-
	Achiever (Old)	Kick Start	MC 2.5	-
	Ambition	Electric Start	MC 5	-
	Ambition	Kick Start	MC 2.5	-
	CBZ	Electric Start	MC 7	-
	CBZ	Kick Start	MC 5	-
	CBZ Gold	Kick Start	MC 5	-
	CBZ Xtreme	Electric Start	MC 7	-
	CBZ Xtreme	Kick Start	MC 5	-
	CD 100	Kick Start	MC 2.5	-
	CD 100SS	Kick Start	MC 2.5	-
	CD Dawn	Kick Start	MC 2.5	-
	CD Delux (New)	Electric Start	MCZ 4	-
	CD Delux (New)	Kick Start	MC 2.5	-
	CD Delux (New)	Kick Start	MCZ 4	-
	CD Delux (Old)	Electric Start	MC 5	-
	CD Delux (Old)	Electric Start	MCZ 4	-
	CD Delux (Old)	Kick Start	MC 2.5	-
	CD Delux PRO	Electric Start	MCZ 4	-
	CD Delux PRO	Kick Start	MC 2.5	-
	Duet	Electric Start	MC 5	-
	Duet	Electric Start	MCZ 5	-
	Glamour (New)	Electric Start	MCZ 4	-
	Glamour (New)	Kick Start	MCZ 4	-
	Glamour (Old)	Electric Start	MC 5	-
	Glamour (Old)	Kick Start	MC 2.5	-



FITMENT CHART - 2 Wheeler /// BIKES + SCOOTERS

NAME OF MANUFACTURER	VEHICLE MODEL	FUEL	AKIYO PART NO.	HITACHI PART NO.
Hero Motor Corp Ltd. - HMCL (Previously known as Hero Honda)	Glamour Pro	Electric Start	MCZ 4	-
	Glamour Programmed F5	Kick Start	MCZ 4	-
	Glamour Programmed FI	Electric Start	MC 5	-
	Glamour Programmed FI	Electric Start	MCZ 4	-
	Glamour Programmed FI	Kick Start	MC 2.5	-
	HF Dawn	Kick Start	MC 2.5	-
	HF Deluxe	Electric Start	MCZ 4	-
	HF Deluxe	Kick Start	MCZ 4	-
	HF Deluxe ECO	Electric Start	MCZ 4	-
	HF Deluxe ECO	Kick Start	MCZ 4	-
	HF Deluxe i3s	Electric Start	MCZ 4	-
	HF Deluxe i3s	Kick Start	MCZ 4	-
	Hunk (New)	Electric Start	MC 7	-
	Hunk (Old)	Electric Start	MCZ 5	-
	Ignitor	Kick Start	MCZ 4	-
	Impulse	Electric Start	MCZ 4	-
	Impulse	Electric Start	MCZ 5	-
	Impulse	Kick Start	MCZ 4	-
	Karizma	Electric Start	MC 7	-
	Karizma ZMR	Electric Start	MC 7	-
	Maestro	Electric Start	MCZ 4	-
	Maestro Edge	Electric Start	MC 5	-
	Maestro Edge	Electric Start	MCZ 5	-
	Passion 10	Electric Start	MCZ 4	-
	Passion 10	Kick Start	MC 2.5	-
	PASSION PRO i3s	Electric Start	MCZ 4	-
	PASSION PRO i3s	Kick Start	MCZ 4	-
	Passion PRO TR (New)	Electric Start	MCZ 4	-
	Passion PRO TR (New)	Kick Start	MC 2.5	-
	Passion PRO TR (New)	Kick Start	MCZ 4	-
	Passion PRO TR (Old)	Electric Start	MC 5	-
	Passion PRO TR (Old)	Electric Start	MCZ 4	-



FITMENT CHART - 2 Wheeler /// BIKES + SCOOTERS

NAME OF MANUFACTURER	VEHICLE MODEL	FUEL	AKIYO PART NO.	HITACHI PART NO.
Hero Motor Corp Ltd. - HMCL (Previously known as Hero Honda)	Passion PRO TR (Old)	Kick Start	MC 2.5	-
	Passion XPRO (New)	Electric Start	MCZ 4	-
	Passion XPRO (New)	Kick Start	MCZ 4	-
	Passion XPRO (Old)	Electric Start	MCZ 4	-
	Passion+	Electric Start	MCZ 4	-
	Passion+	Kick Start	MC 2.5	-
	Pleasure	Electric Start	MC 5	-
	Pleasure	Electric Start	MCZ 5	-
	Sleek	Kick Start	MC 2.5	-
	Splendor (New)	Electric Start	MCZ 4	-
	Splendor (New)	Kick Start	MC 2.5	-
	Splendor (Old)	Electric Start	MC 5	-
	Splendor (Old)	Kick Start	MC 2.5	-
	Splendor iSmart 110	Electric Start	MCZ 4	-
	Splendor iSmart 110	Kick Start	MC 2.5	-
	Splendor iSmart 110	Kick Start	MCZ 4	-
	Splendor NXG (New)	Kick Start	MCZ 4	-
	Splendor NXG (Old)	Kick Start	MC 2.5	-
	Splendor NXG Pro	Electric Start	MCZ 4	-
	Splendor NXG Pro	Kick Start	MC 2.5	-
	Splendor PRO (New)	Electric Start	MCZ 4	-
	Splendor PRO (New)	Kick Start	MC 2.5	-
	Splendor PRO (New)	Kick Start	MCZ 4	-
	Splendor PRO (Old)	Electric Start	MC 5	-
	Splendor PRO (Old)	Kick Start	MC 2.5	-
	Splendor PRO (Old)	Kick Start	MCZ 4	-
	Splendor Pro Classic	Electric Start	MCZ 4	-
	Splendor Pro Classic	Kick Start	MC 2.5	-
	Splendor+ (New)	Electric Start	MCZ 4	-
	Splendor+ (New)	Kick Start	MC 2.5	-
	Splendor+ (Old)	Electric Start	MC 5	-
	Splendor+ (Old)	Kick Start	MC 2.5	-



FITMENT CHART - 2 Wheeler /// BIKES + SCOOTERS

NAME OF MANUFACTURER	VEHICLE MODEL	FUEL	AKIYO PART NO.	HITACHI PART NO.
Hero Motor Corp Ltd. - HMCL (Previously known as Hero Honda)	Splendor+ i3s	Electric Start	MCZ 4	-
	Splendor+ i3s	Kick Start	MC 2.5	-
	Street	Electric Start	MC 5	-
	Street	Kick Start	MC 2.5	-
	Super Splendor (New)	Electric Start	MCZ 4	-
	Super Splendor (New)	Kick Start	MC 2.5	-
	Super Splendor (New)	Kick Start	MCZ 4	-
	Super Splendor (Old)	Electric Start	MC 5	-
	Super Splendor (Old)	Kick Start	MC 2.5	-
	Super Splendor (Old)	Kick Start	MCZ 4	-
	Super Splendor NXG	Electric Start	MC 5	-
	Super Splendor NXG	Kick Start	MC 2.5	-
	Winner	Electric Start	MC 5	-
	Xtreme	Electric Start	MCZ 5	-
	Xtreme	Kick Start	MCZ 4	-
	Xtreme	Kick Start	MCZ 5	-
	Xtreme Sports	Electric Start	MCZ 5	-
Xtreme Sports	Kick Start	MCZ 5	-	
Honda Motorcycle & Scooter India Pvt. Ltd. / HMSIL	Activa (New)	Electric Start	MCZ 4	-
	Activa (Old)	Electric Start	MC 5	-
	Activa 125	Electric Start	MCZ 4	-
	Activa 3G	Electric Start	MCZ 4	-
	Activa 4G	Electric Start	MCZ 4	-
	Activa i	Electric Start	MCZ 4	-
	Aviator	Electric Start	MC 5	-
	Aviator	Electric Start	MCZ 4	-
	CB 1000R	Electric Start	MC 7	-
	CB 125 Shine SP	Electric Start	MCZ 4	-
	CB Hornet 160R	Electric Start	MCZ 5	-
	CB Shine	Electric Start	MCZ 4	-
	CB Shine	Kick Start	MC 2.5	-
	CB Trigger	Electric Start	MCZ 5	-



FITMENT CHART - 2 Wheeler /// BIKES + SCOOTERS

NAME OF MANUFACTURER	VEHICLE MODEL	FUEL	AKIYO PART NO.	HITACHI PART NO.
Honda Motorcycle & Scooter India Pvt. Ltd. / HMSIL	CB Twister	Electric Start	MCZ 4	-
	CB Twister	Kick Start	MC 2.5	-
	CB Unicorn 150	Electric Start	MC 7	-
	CB Unicorn 160	Electric Start	MCZ 5	-
	CB Unicorn Dazzler (New)	Electric Start	MCZ 4	-
	CB Unicorn Dazzler (New)	Kick Start	MC 2.5	-
	CB Unicorn Dazzler (Old)	Electric Start	MCZ 5	-
	CBF Stunner	Electric Start	MCZ 4	-
	CBF Stunner	Kick Start	MC 2.5	-
	CBR 1000RR	Electric Start	MC 7	-
	CBR 150	Electric Start	MC 7	-
	CBR 250R	Electric Start	MC 7	-
	CBR 650F	Electric Start	MC 9	-
	CD110 Dream	Electric Start	MCZ 4	-
	CD110 Dream	Kick Start	MC 2.5	-
	Dazzler	Electric Start	MCZ 5	-
	Dio - SCV110FD	Electric Start	MCZ 4	-
	Dio (New)	Electric Start	MCZ 4	-
	Dio (Old)	Electric Start	MC 5	-
	Dio (Old)	Electric Start	MCZ 5	-
	Dream Neo	Electric Start	MCZ 4	-
	Dream Neo	Kick Start	MC 2.5	-
	Dream Yuga	Electric Start	MCZ 4	-
	Dream Yuga	Kick Start	MC 2.5	-
	Livo	Electric Start	MCZ 4	-
	NAVI	Electric Start	MCZ 4	-
	Stunner F1	Electric Start	MC 7	-
	Kanda Motors Pvt. Ltd.	Mission 100	Electric Start	MC 5
Thunder		Electric Start	MC 5	-



FITMENT CHART - 2 Wheeler /// BIKES + SCOOTERS

NAME OF MANUFACTURER	VEHICLE MODEL	FUEL	AKIYO PART NO.	HITACHI PART NO.
Kinetic Honda / Kinetic Engineering Limited	Kinetic 4s	Electric Start / Self Start	MC 5	-
	Kinetic Blaze	Electric Start / Self Start	MC 9	-
	Kinetic Blaze	Kick Start	MC 2.5	-
	Kinetic Boss	Kick Start	MC 2.5	-
	Kinetic Challenger	Kick Start	MC 2.5	-
	Kinetic GF 170 Laser	Electric Start / Self Start	MC 5	-
	Kinetic GF 170 Laser	Kick Start	MC 2.5	-
	Kinetic Honda DX	Electric Start / Self Start	MC 5	-
	Kinetic Honda EX	Electric Start / Self Start	MC 5	-
	Kinetic Honda ZX	Electric Start / Self Start	MC 5	-
	Kinetic K4 100	Kick Start	MC 2.5	-
	Kinetic Kine	Electric Start / Self Start	MC 9	-
	Kinetic Kine	Kick Start	MC 9	-
	Kinetic Marvel	Electric Start / Self Start	MC 5	-
	Kinetic Nova 135	Electric Start / Self Start	MC 9	-
	Kinetic Nova DLX	Electric Start / Self Start	MC 9	-
	Kinetic Nova DLX	Kick Start	MC 9	-
	Kinetic Stryker	Kick Start	MC 2.5	-
	Kinetic SYM	Electric Start / Self Start	MC 9	-
	Kinetic SYM	Kick Start	MC 9	-
Kinetic SYM Flyte	Electric Start / Self Start	MC 5	-	
Kinetic Velocity	Kick Start	MC 2.5	-	
Kinetic Zing	Electric Start / Self Start	MC 5	-	
Kinetic Zing 80	Electric Start / Self Start	MC 5	-	
Kinetic ZX	Electric Start / Self Start	MC 5	-	
Kinetic ZX Zoom	Electric Start / Self Start	MC 5	-	
KTM Sport motorcycle AG / Bajaj Auto Ltd.	200 DUKE	Electric Start	MC 9	-
	390 DUKE	Electric Start	MC 9	-
LML / Lohia Machines Limited	Ardeno FX	Kick Start	MC 2.5	-
	Beamer 150	Electric Start	MC 9	-
	Beamer 150	Kick Start	MC 2.5	-
	CRD 100	Kick Start	MC 2.5	-



FITMENT CHART - 2 Wheeler /// BIKES + SCOOTERS

NAME OF MANUFACTURER	VEHICLE MODEL	FUEL	AKIYO PART NO.	HITACHI PART NO.
LML / Lohia Machines Limited	Energy FX	Kick Start	MC 2.5	-
	Fazer LX	Kick Start	MC 2.5	-
	Freedom 125	Electric Start	MC 5	-
	Freedom DX	Kick Start	MC 2.5	-
	Freedom Prima 110	Kick Start	MC 2.5	-
	Freedom Prima 125	Kick Start	MC 2.5	-
	Freedom Topper	Kick Start	MC 2.5	-
	Graptor 150	Electric Start	MC 5	-
	Graptor 150	Kick Start	MC 2.5	-
	NVSPL	Electric Start	MC 9	-
	NVSPL	Kick Start	MC 9	-
	Scooter CVT (4 Stroke Engine)	Electric Start	MC 9	-
	Scooter NV (2 Stroke Engine)	Electric Start	MC 5	-
	Scooter NV (4 Stroke Engine)	Electric Start	MC 9	-
	Scooter NVLS (4 Stroke Engine)	Electric Start	MC 9	-
	Select (2 Stroke Engine)	Electric Start	MC 5	-
	Select (4 Stroke Engine)	Electric Start	MC 9	-
	Sensation	Electric Start	MC 9	-
	Star Delux (4 Stroke Engine)	Electric Start	MC 9	-
	Star Delux 125 ESAOM EURO - III	Electric Start	MC 9	-
	Star Delux 150 ESAOM EURO - III	Electric Start	MC 9	-
	Star EURO 200	Electric Start	MC 9	-
	Star Express	Electric Start	MC 9	-
	Stella (4 Stroke Engine)	Electric Start	MC 9	-
	Supremo	Electric Start	MC 9	-
	Supremo	Kick Start	MC 2.5	-
	VR 135	Electric Start	MC 9	-
	VR 135	Kick Start	MC 9	-



FITMENT CHART - 2 Wheeler /// BIKES + SCOOTERS

NAME OF MANUFACTURER	VEHICLE MODEL	FUEL	AKIYO PART NO.	HITACHI PART NO.
Mahindra Two Wheelers Limited (M&M Ltd.)	4s	Electric Start	MC 5	-
	Blaze	Electric Star	MC 9	-
	Blaze	tKick Start	MC 2.5	-
	Centuro	Electric Start	MC 7	-
	Centuro N1	Electric Start	MC 7	-
	Centuro NXT	Electric Start	MC 7	-
	Centuro Rockstar	Electric Start	MC 5	-
	Centuro Rockstar	Electric Start	MCZ 5	-
	Centuro Rockstar	Kick Start	MC 2.5	-
	Centuro XT	Electric Start	MC 7	-
	Duro	Kick Start	MC 7	-
	Duro DZ	Electric Start	MC 7	-
	Duro DZ	Kick Start	MC 7	-
	Flyte	Electric Start	MC 5	-
	Flyte	Electric Start	MC 9	-
	Flyte	Kick Start	MC 5	-
	GUSTO 125 DX (125CC)	Electric Start	MC 5	-
	GUSTO 125 DX (125CC)	Electric Start	MCZ 5	-
	GUSTO 125 VX (125CC)	Electric Start	MC 7	-
	GUSTO DX (110CC)	Electric Start	MC 5	-
	GUSTO DX (110CC)	Electric Start	MCZ 5	-
	GUSTO HX (110CC)	Electric Start	MC 5	-
	GUSTO HX (110CC)	Electric Start	MCZ 5	-
	GUSTO VX (110CC)	Electric Start	MC 7	-
	Kine	Kick Start	MC 2.5	-
	Laser	Electric Start	MC 5	-
	Mojo	Electric Start	MC 9	-
	Nova	Electric Start	MC 9	-
	Nova 135	Electric Start	MC 9	-
	Nova DLX	Electric Start	MC 9	-
	Penturo	Electric Start	MC 5	-
	Penturo	Kick Start	MC 2.5	-



FITMENT CHART - 2 Wheeler /// BIKES + SCOOTERS

NAME OF MANUFACTURER	VEHICLE MODEL	FUEL	AKIYO PART NO.	HITACHI PART NO.
Mahindra Two Wheelers Limited (M&M Ltd.)	Rodeo	Electric Start	MC 7	-
	Rodeo RZ	Electric Start	MC 7	-
	Rodeo UZO 125	Electric Start	MC 7	-
	Stallion	Electric Start	MC 5	-
	Stryker	Electric Start	MC 5	-
	Zing	Electric Start	MC 5	-
	Zing 80	Electric Start	MC 5	-
	ZX Zoom	Electric Start	MC 5	-
Piaggio Group / VESPA - INDIA	Vespa	Electric Start	MC 5	-
	Vespa SXL 125	Electric Start	MC 5	-
	Vespa SXL 150	Electric Start	MC 5	-
	Vespa VXL 125	Electric Start	MC 5	-
	Vespa VXL 150	Electric Start	MC 5	-
Royal Enfield (India) / The Enfield Cycle Company Ltd.	BULLET 350	Kick Start	MC 5	-
	BULLET 350 TWIN SPARK	Electric Start	MC 14	-
	BULLET 500	Electric Start	MC 14	-
	BULLET 500	Kick Start	MC 5	-
	BULLET CLASSIC 500	Electric Start	MC 14	-
	BULLET DELUX	Kick Start	MC 5	-
	BULLET ELECTRA 500	Electric Start	MC 14	-
	BULLET ELECTRA TWIN SPARK	Electric Start	MC 14	-
	BULLET STD	Kick Start	MC 5	-
	CLASSIC 350	Electric Start	MC 14	-
	CLASSIC 500	Electric Start	MC 14	-
	CLASSIC 500 FI	Electric Start	MC 14	-
	CLASSIC BATTLE GREEN	Electric Start	MC 14	-
	CLASSIC CHROME	Electric Start	MC 14	-
	CLASSIC DESERT STORM	Electric Start	MC 14	-
	CLASSIC SQUADRON BLUE	Electric Start	MC 14	-
	CONTINENTAL GT	Electric Start	MC 14	-
	ELECTRA	Electric Start	MC 14	-
ELECTRA	Kick Start	MC 5	-	



FITMENT CHART - 2 Wheeler /// BIKES + SCOOTERS

NAME OF MANUFACTURER	VEHICLE MODEL	FUEL	AKIYO PART NO.	HITACHI PART NO.
Royal Enfield (India) / The Enfield Cycle Company Ltd.	ELECTRA 5S	Electric Start	MC 14	-
	ELECTRA 5S	Kick Start	MC 5	-
	LIGHTNING	Kick Start	MC 5	-
	MACHISMO 350	Kick Start	MC 5	-
	MACHISMO 500	Kick Start	MC 5	-
	STANDARD 500	Kick Start	MC 5	-
	THUNDERBIRD	Kick Start	MC 5	-
	THUNDERBIRD 350	Electric Start	MC 14	-
THUNDERBIRD 500	Electric Start	MC 14	-	
Sharda Automobiles	Rock 100	Kick Start	MC 5	-
	UFO	Kick Start	MC 7	-
	Xpression Plus	Kick Start	MC 5	-
Suzuki Motorcycle India Pvt. Ltd.	Access 125 (New)	Electric Start	MCZ 4	-
	Access 125 (Old)	Electric Start	MC 5	-
	Gixxer	Electric Start	MCZ 4	-
	Gixxer SF	Electric Start	MCZ 4	-
	Gixxer SP	Electric Start	MCZ 4	-
	GS 150R (New)	Electric Start	MC 7	-
	GS 150R (New)	Kick Start	MC 7	-
	GS 150R (Old)	Electric Start	MC 9	-
	GS 150R (Old)	Kick Start	MC 9	-
	Hayate	Electric Start	MC 5	-
	Hayate	Electric Start	MCZ 4	-
	Hayate	Kick Start	MC 2.5	-
	Hayate EP (110 CC)	Electric Start	MC 5	-
	Heat	Kick Start	MC 2.5	-
	Let's	Electric Start	MCZ 4	-
	Slingshot	Electric Start	MC 5	-
	Slingshot Plus	Electric Start	MC 5	-
	Swish 125	Electric Start	MC 5	-
	Swish 125	Electric Start	MCZ 4	-
	Zeus	Electric Start	MC 5	-
Zeus 125X / Zeus 125XU	Kick Start	MC 2.5	-	



FITMENT CHART - 2 Wheeler /// BIKES + SCOOTERS

NAME OF MANUFACTURER	VEHICLE MODEL	FUEL	AKIYO PART NO.	HITACHI PART NO.
TVS Motor Company Limited	Apache	Electric Start	MC 5	-
	Apache	Kick Start	MC 5	-
	Apache 150	Electric Start	MC 9	-
	Apache FI160	Electric Start	MC 9	-
	Apache Hyper Edge	Electric Start	MC 9	-
	Apache RTR160	Electric Start	MC 9	-
	Apache RTR180	Electric Start	MC 9	-
	Apache RTR180 ABS	Electric Start	MC 9	-
	Apache RTR200	Kick Start	MC 9	-
	Apache RTR200 4V	Electric Start	MC 14	-
	AX 100	Kick Start	MC 2.5	-
	AX 100R	Kick Start	MC 2.5	-
	Centra	Kick Start	MC 2.5	-
	Fiero 150	Electric Start	MC 5	-
	Fiero 150	Kick Start	MC 2.5	-
	Fiero F2 150	Electric Start	MC 5	-
	Fiero F2 150	Kick Start	MC 2.5	-
	Fiero FX 150	Electric Start	MC 5	-
	Fiero FX 150	Kick Start	MC 2.5	-
	Flame 110	Electric Start	MC 5	-
	Flame 125	Electric Start	MC 5	-
	Jive TMATIC	Electric Start	MC 5	-
	Jupiter	Electric Start	MC 5	-
	Jupiter Million R	Electric Start	MC 5	-
	Jupiter ZX	Electric Start	MC 5	-
	Max 100	Kick Start	MC 2.5	-
	Max 100 DLX	Kick Start	MC 2.5	-
	Max 100R	Kick Start	MC 2.5	-
	Max 125R	Electric Start	MC 5	-
	Max 150R	Electric Start	MC 9	-
	Max 4R 100	Kick Start	MC 2.5	-
	Phoenix 125	Electric Start	MC 5	-



FITMENT CHART - 2 Wheeler /// BIKES + SCOOTERS

NAME OF MANUFACTURER	VEHICLE MODEL	FUEL	AKIYO PART NO.	HITACHI PART NO.	
TVS Motor Company Limited	Samurai	Kick Start	MC 2.5	-	
	Scooty	Electric Start	MC 5	-	
	Scooty PEP +	Electric Start	MC 5	-	
	Scooty PEP DLX	Electric Start	MC 5	-	
	Scooty Streak	Electric Start	MC 5	-	
	Scooty Teenz	Electric Start	MC 5	-	
	Scooty Zest 110	Electric Start	MC 5	-	
	Shaolin 135	Kick Start	MC 2.5	-	
	Shogun 110	Kick Start	MC 2.5	-	
	Spectra	Electric Start	MC 5	-	
	Star 100	Kick Start	MC 2.5	-	
	Star City 100	Kick Start	MC 2.5	-	
	Star City+ 110	Electric Start	MC 5	-	
	Star DLX 100	Kick Start	MC 2.5	-	
	Star Sport 100	Kick Start	MC 2.5	-	
	Star STD	Kick Start	MC 2.5	-	
	Victor	Kick Start	MC 2.5	-	
	Victor Edge 125	Electric Start	MC 5	-	
	Victor Edge 125	Kick Start	MC 2.5	-	
	Victor GL 110	Kick Start	MC 2.5	-	
	Victor GLX 125	Electric Start	MC 5	-	
	Victor GLX 125	Kick Start	MC 2.5	-	
	Victor GX 110	Kick Start	MC 2.5	-	
	Wego 110	Electric Start	MC 5	-	
	Wego 110	Electric Start	MCZ 5	-	
	Vibgyor Vehicles Limited	Gallop (100 CC)	Electric Start	MC 5	-
		Hunter (125 CC)	Electric Start	MC 7	-
Shark (150 CC)		Electric Start	MC 7	-	
YAMAHA India Yamaha Motor Pvt. Ltd.	Ace	Kick Start	MC 2.5	-	
	Alba 106	Electric Start	MC 5	-	
	Alba 106	Kick Start	MC 2.5	-	
	Alpha	Electric Start	MC 5	-	



FITMENT CHART - 2 Wheeler /// BIKES + SCOOTERS

NAME OF MANUFACTURER	VEHICLE MODEL	FUEL	AKIYO PART NO.	HITACHI PART NO.
YAMAHA India Yamaha Motor Pvt. Ltd.	Crux	Kick Start	MC 2.5	-
	Crux R	Kick Start	MC 2.5	-
	Enticer (New)	Electric Start	MC 7	-
	Enticer (New)	Kick Start	MC 2.5	-
	Enticer (Old)	Electric Start	MC 9	-
	Enticer (Old)	Kick Start	MC 5	-
	Fascino	Electric Start	MC 5	-
	Fascino	Kick Start	MC 5	-
	FAZER	Electrical Start	MC 5	-
	FAZER 150	Electrical Start	MC 5	-
	FAZER DLX	Electrical Start	MC 5	-
	FAZER FI (VERSION 2.0)	Electric Start	MCZ 5	-
	FAZER LX	Kick Start	MC 2.5	-
	FZ	Electrical Start	MC 5	-
	FZ	Kick Start	MC 5	-
	FZ 16	Electrical Start	MC 5	-
	FZ 25	Electric Start	MC 7	-
	FZ FI (VERSION 2.0)	Electric Start	MCZ 5	-
	FZS	Electrical Start	MC 5	-
	FZS	Electrical Start	MCZ 5	-
	FZS FI (VERSION 2.0)	Electric Start	MCZ 5	-
	Gladiator DLX	Electrical Start	MC 5	-
	Gladiator DX	Kick Start	MC 2.5	-
	Gladiator SS125	Electrical Start	MC 5	-
	Gladiator SS125	Kick Start	MC 2.5	-
	Gladiator STD	Kick Start	MC 2.5	-
	Libero G5	Kick Start	MC 2.5	-
	R 15	Electric Start	MCZ 5	-
	RAJDOOT STD.RXZ	Kick Start	MC 2.5	-
	Ray Z	Electric Start	MC 5	-
	Ray ZR	Electric Start	MC 5	-
	RX 135	Kick Start	MC 2.5	-



FITMENT CHART - 2 Wheeler /// BIKES + SCOOTERS

NAME OF MANUFACTURER	VEHICLE MODEL	FUEL	AKIYO PART NO.	HITACHI PART NO.
YAMAHA India Yamaha Motor Pvt. Ltd.	RXG	Kick Start	MC 2.5	-
	RXZ	Kick Start	MC 2.5	-
	RZX	Electric Start	MC 5	-
	RZX 135	Kick Start	MC 2.5	-
	SALUTO	Electric Start	MC 5	-
	SALUTO	Kick Start	MC 5	-
	SALUTO DISK BRAKE	Electric Start	MC 5	-
	SALUTO RX	Electric Start	MC 5	-
	SS 125	Electric Start	MC 5	-
	SZ RR	Electric Start	MC 5	-
	SZ RR (VERSION 2.0)	Electric Start	MC 5	-
	SZ RR (VERSION 2.0)	Kick Start	MC 5	-
	SZR	Electric Start	MC 5	-
	SZS	Electric Start	MC 5	-
	SZS	Kick Start	MC 5	-
	SZX	Electric Start	MC 5	-
	YBR 110	Electric Start	MC 5	-
	YBR 110	Kick Start	MC 5	-
	YBR 125	Electric Start	MC 5	-
	YBX 125	Kick Start	MC 2.5	-
	YD 125	Kick Start	MC 2.5	-
	YZF R15	Electric Start	MCZ 5	-
	YZF R15 (VERSION 2.0)	Electric Start	MCZ 5	-
	YZF R15S	Electric Start	MCZ 5	-



FITMENT CHART - 4 Wheeler /// CARs + VANs + UVs + MUVs + SUVs

NAME OF MANUFACTURER	VEHICLE MODEL	FUEL	AKIYO PART NO.	HITACHI PART NO.
Ashok Leyland Nissan	Stile	Diesel	85D23L	80D23L / 85D23L
Audi India Pvt. Ltd.	A3 Series	Diesel	-	DIN100L(60038-L5)
	A4 Series	Diesel	-	DIN100L(60038-L5)
	A4 Series	Petrol	-	DIN100L(60038-L5)
	A6 Series	Petrol	-	DIN88L(58827-L5)
	A7 Series	Diesel	-	DIN74L(57412-L3)
	A8 Series	Diesel	-	DIN100L(60038-L5)
	Q5 Series	Diesel	-	DIN100L(60038-L5)
	Q7 3.0 Series	Diesel	-	DIN74L(57412-L3)
	Q7 Series	Diesel	-	DIN100L(60038-L5)
BMW India (Bayerische Motoren Werke AG)	5 Series	Diesel	-	DIN100L(60038-L5)
	5 Series	Petrol	-	DIN100L(60038-L5)
	6 Series	Diesel	-	DIN100L(60038-L5)
	7 Series	Petrol	-	DIN88L(58827-L5)
	Z4 3.0L Series	Diesel	-	DIN74L(57412-L3)
Chevrolet (Previously known as General Motors India Pvt. Ltd.)	Adventure	Petrol	DIN55L	DIN55L(55559-L2)
	Aveo	Petrol / CNG	DIN55L	DIN55L(55559-L2)
	Aveo U-VA	Petrol	DIN55L	DIN55L(55559-L2)
	Beat	Petrol	DIN44LH	DIN45L(54459-L1)/DIN44LH
	Beat	Petrol / Diesel / LPG / CNG	DIN50L	DIN50L(55066-L1)
	Captiva	Diesel	-	DIN88L(58827-L5)
	Cruse	Diesel	DIN80L	DIN80L(58014-LB4)
	Enjoy	Diesel	70D26R	65D26R / 90D26R
	Forester	Petrol	55B24L(S)	46B24L(S) / 60B24L(S)
	Opel Astra	Diesel	-	DIN60L(56219-L2)
	Opel Astra	Petrol	DIN55L	DIN55L(55559-L2)
	Opel Corsa	Petrol	-	DIN55R(55565-L2)
	Opel Swing	Petrol	DIN55L	DIN55L(55559-L2)
	Opel Vectra	Diesel	-	DIN74L(57412-L3)
	Opel Vectra	Petrol	-	DIN60L(56219-L2)
	Optra	Diesel	-	105D31R



FITMENT CHART - 4 Wheeler /// CARs + VANs + UVs + MUVs + SUVs

NAME OF MANUFACTURER	VEHICLE MODEL	FUEL	AKIYO PART NO.	HITACHI PART NO.
Chevrolet (Previously known as General Motors India Pvt. Ltd.)	Optra	Petrol	70D26R	65D26R / 90D26R
	Optra	Petrol	85D23R	85D23R
	Sail	Petrol	55D24L(S)	46B24L(S) / 60B24L(S)
	Sail	Petrol	DIN44LH	DIN45L(54459-L1) / DIN44LH
	Sail U-VA	Diesel	70D26R	65D26R / 90D26R
	Spark	Petrol	36B20L / 40B20L	40B19L / 42B19L
	SR-V	Petrol	85D23R	85D23R
	Tavera - NEO BS3 Tavera - NEO BS4	Diesel Diesel	70D26R 70D26L	65D26R / 90D26R 65D26L / 90D26L
Daewoo Motors - India	Cielo	Petrol	DIN55L	DIN55L(55559-L2) / DIN60L(56219-L2)
	Matiz	Petrol	36B20R / 40B20R	40B19R / 42B19R
	Nexia	Petrol	DIN55L	DIN55L(55559-L2) / DIN60L(56219-L2)
Fiat Automobiles India Pvt. Ltd.	Avventura Sport	Diesel	DIN50L	DIN50L(55066-L1)
	Avventura Sport	Petrol	DIN44LH	DIN45L(54459-L1) / DIN44LH
	Linea	Diesel	DIN50L	DIN50L(55066-L1)
	Linea	Petrol	DIN44LH	DIN45L(54459-L1) / DIN44LH
	Palio	Diesel	DIN50L	DIN50L(55066-L1)
	Palio	Petrol	DIN44LH	DIN45L(54459-L1) / DIN44LH
	Palio - Stile	Petrol	DIN44LH	DIN45L(54459-L1) / DIN44LH
	Petra	Diesel	DIN50L	DIN50L(55066-L1)
	Petra	Petrol	DIN44LH	DIN45L(54459-L1) / DIN44LH
	Punto	Diesel	DIN50L	DIN50L(55066-L1)
	Punto	Petrol	DIN44LH	DIN45L(54459-L1) / DIN44LH
	Siena	Diesel	DIN50L	DIN50L(55066-L1)
	Siena	Petrol	DIN44LH	DIN45L(54459-L1) / DIN44LH
	Uno	Diesel	DIN50L	DIN50L(55066-L1)
Uno	Petrol	DIN44LH	DIN45L(54459-L1) / DIN44LH	
Force Motors Ltd.	Challenger	Diesel	95D31R	95D31R
	Cruiser	Diesel	95D31R	95D31R
	Force One	Diesel	-	105D31R
	Gama	Diesel	95D31R	95D31R
	Gurkha	Diesel	95D31R	95D31R



FITMENT CHART - 4 Wheeler /// CARs + VANs + UVs + MUVs + SUVs

NAME OF MANUFACTURER	VEHICLE MODEL	FUEL	AKIYO PART NO.	HITACHI PART NO.
Force Motors Ltd.	Judo	Diesel	95D31R	95D31R
	Matador	Diesel	95D31R	95D31R
	Trax	Diesel	95D31R	95D31R
	XL - Pickup	Diesel	95D31R	95D31R
Ford India Pvt. Ltd.	Eco Sport	Petrol / Diesel	DIN44LH	DIN45L(54459-L1) / DIN44LH
	Endeavour	Diesel	95D31R	95D31R / 105D31R
	Escort	Diesel	-	DIN60L(56219-L2)
	Fiesta	Diesel	-	DIN60L(56219-L2)
	Fiesta	Petrol	DIN44LH	DIN45L(54459-L1) / DIN44LH
	Fiesta 1.6L	Petrol	-	DIN60L(56219-L2)
	Fiesta Classic	Petrol / Diesel	DIN44LH	DIN45L(54459-L1) / DIN44LH
	Fiesta DuraTorque 1.4L	Diesel	-	DIN60L(56219-L2)
	Figo	Petrol / Diesel	DIN44LH	DIN45L(54459-L1) / DIN44LH
	Fusion	Petrol / Diesel	DIN44LH	DIN45L(54459-L1) / DIN44LH
	Ikon	Petrol / Diesel	DIN44LH	DIN45L(54459-L1) / DIN44LH
	Mondeo	Diesel	-	DIN74L(57412-L3)
	Mondeo	Petrol	DIN44LH	DIN45L(54459-L1) / DIN44LH
	New Fiesta	Diesel	-	DIN60L(56219-L2)
HM (Hindustan Motors Limited)	Ambassador	Diesel	95D31R	95D31R / 105D31R
	Ambassador	Petrol	70D26R	65D26R / 90D26R
	Ambassador Avigo / Grand	Petrol	70D26R	65D26R / 90D26R
	Ambassador ISUZU MPFI	Petrol	70D26R	65D26R / 90D26R
	Cedia	Diesel	-	105D31R
	Cedia	Petrol	36B20R / 40B20R	40B19R / 42B19R
	Contessa	Petrol	70D26R	65D26R / 90D26R
	Lancer	Diesel	-	105D31R
	Lancer	Petrol	36B20R / 40B20R	40B19R / 42B19R
	Lancer Evo X	Petrol	36B20R / 40B20R	40B19R / 42B19R
	Montero	Diesel	85D23L	80D23L / 85D23L
	Oka	Diesel	95D31R	95D31R / 105D31R
	Outlander	Diesel	85D23L	80D23L / 85D23L
	Pajero / Pajero Sport	Diesel	95D31R	95D31R / 105D31R
	Trekker	Diesel	95D31R	95D31R / 105D31R



FITMENT CHART - 4 Wheeler /// CARs + VANs + UVs + MUVs + SUVs

NAME OF MANUFACTURER	VEHICLE MODEL	FUEL	AKIYO PART NO.	HITACHI PART NO.
Honda Motor Co., Ltd.	Accord	Petrol	55B24L(S)	46B24L(S) / 60B24L(S)
	Amaze	Diesel	55B24L(S)	46B24L(S) / 60B24L(S)
	Amaze	Petrol	36B20L / 40B20L	40B19L / 42B19L
	Brio	Petrol	36B20L / 40B20L	40B19L / 42B19L
	BR-V	Diesel	55B24L(S)	46B24L(S) / 60B24L(S)
	BR-V	Petrol	36B20L / 40B20L	40B19L / 42B19L
	City	Petrol	36B20L / 40B20L	40B19L / 42B19L
	City (New)	Diesel	55B24L(S)	46B24L(S) / 60B24L(S)
	City (New)	Petrol	36B20L / 40B20L	40B19L / 42B19L
	Civic / CRV	Petrol	55B24L(S)	46B24L(S) / 60B24L(S)
	Jazz	Petrol	36B20L / 40B20L	40B19L / 42B19L
	Mobilio VTEC	Diesel	55B24L(S)	46B24L(S) / 60B24L(S)
	Mobilio VTEC	Petrol	36B20L / 40B20L	40B19L / 42B19L
	Hyundai Motor India Limited (HMIL)	Accent	Petrol	55B24L(S)
Accent CRDI / Accent VIVA		Diesel	-	DIN60L(56219-L2)
Creta		Diesel	85D23L	80D23L / 85D23L
Creta		Petrol	-	45D21L(BH)
Elantra		Petrol	85D23L	80D23L / 85D23L
Elantra Getz		Petrol / Diesel	55B24L(S)	46B24L(S) / 60B24L(S)
Eon 1LTR		Petrol	36B20L / 40B20L	40B19L / 42B19L
Eon 800		Petrol	36B20R / 40B20R	40B19R / 42B19R
Fluidic Verna 1.4L		Diesel	85D23L	80D23L / 85D23L
Fluidic Verna 1.4L		Petrol	-	45D21L(BH)
Fluidic Verna 1.6L		Diesel	85D23L	80D23L / 85D23L
Fluidic Verna 1.6L		Petrol	-	45D21L(BH)
Getz 1.1LTR		Diesel	55B24L(S)	46B24L(S) / 60B24L(S)
Getz 1.1LTR		Petrol	-	45D21L(BH)
Getz 1.3LTR		Diesel	55B24L(S)	46B24L(S) / 60B24L(S)
Getz 1.4LTR		Petrol	-	45D21L(BH)
Getz 1.6LTR		Diesel	85D23L	80D23L / 85D23L
Getz Prime		Petrol	55B24L(S)	46B24L(S) / 60B24L(S)
Grand I10		Diesel	85D23L	80D23L / 85D23L



FITMENT CHART - 4 Wheeler /// CARs + VANs + UVs + MUVs + SUVs

NAME OF MANUFACTURER	VEHICLE MODEL	FUEL	AKIYO PART NO.	HITACHI PART NO.
Hyundai Motor India Limited (HMIL)	Grand I10	Petrol	40B20L(BH)	-
	I10	Petrol	40B20L(BH)	-
	I20	Diesel	85D23L	80D23L / 85D23L
	I20	Petrol	-	45D21L(BH)
	I20 Active	Diesel	85D23L	80D23L / 85D23L
	I20 Active	Petrol	40B20L(BH)	-
	I20 Elite	Diesel	85D23L	80D23L / 85D23L
	I20 Elite	Petrol	40B20L(BH)	-
	New Sonata	Petrol	85D23L	80D23L / 85D23L
	Santa FE	Diesel	-	105D31L
	Santro Xing	Petrol	36B20R / 40B20R	40B19R / 42B19R
	Santro Zip-Drive	Petrol	36B20R / 40B20R	40B19R / 42B19R
	Sonata Embera MT/AT	Petrol	85D23L	80D23L / 85D23L
	Verna	Petrol	55B24L(S)	46B24L(S) / 60B24L(S)
	Verna CRDI	Diesel	-	45D21L(BH)
	Xcent	Diesel	-	45D21L(BH)
Xcent	Petrol	40B20L(BH)	-	
ICML (International Cars And Motors Ltd.)	Delite	Diesel	70D26R	65D26R / 90D26R
	Extreme	Diesel	70D26R	65D26R / 90D26R
	Rhino	Diesel	70D26R	65D26R / 90D26R
	Winner	Diesel	70D26R	65D26R / 90D26R
	Xcitor	Diesel	70D26R	65D26R / 90D26R
ISUZU Motors India Pvt. Ltd.	D-Max	Diesel	70D26L	65D26L / 90D26L
	D-Max V-Cross	Diesel	70D26L	65D26L / 90D26L
	MU 7	Diesel	70D26L	65D26L / 90D26L
Jaguar Land Rover Limited / TATA Motors	JAGUAR F	Petrol / Diesel	-	DIN100L(60038-L5)
	JAGUAR XE	Diesel	-	DIN88L(58827-L5)
	JAGUAR XF	Petrol / Diesel	-	DIN88L(58827-L5)
	JAGUAR XJ	Petrol / Diesel	-	DIN100L(60038-L5)



FITMENT CHART - 4 Wheeler /// CARs + VANs + UVs + MUVs + SUVs

NAME OF MANUFACTURER	VEHICLE MODEL	FUEL	AKIYO PART NO.	HITACHI PART NO.
Mahindra & Mahindra Limited (M&M Ltd.)	Armada	Diesel	95D31R	95D31R
	Army Series 550XD (New)	Diesel	70D26R	65D26R / 90D26R
	Army Series 550XD (Old)	Diesel	95D31R	95D31R
	Bolero (New)	Diesel	70D26R	65D26R / 90D26R
	Bolero (Old)	Diesel	95D31R	95D31R
	Bolero Camper	Diesel	70D26R	65D26R / 90D26R
	Bolero Hybrid	Diesel	-	105D31R
	Bolero Maxi Truck	Diesel	70D26R	65D26R / 90D26R
	Bolero Pick-up	Diesel	70D26R	65D26R / 90D26R
	Commander 650 (New)	Diesel	70D26R	65D26R / 90D26R
	Commander 650 (Old)	Diesel	95D31R	95D31R
	Genio	Diesel	70D26R	65D26R / 90D26R
	KUV100 (ESS Model)	Petrol / Diesel	70D26R	65D26R / 90D26R
	KUV100 (ESS Model)	Petrol / Diesel	85D23R	85D23R
	Logan	Petrol / CNG	DIN50L	DIN50L(55066-L1)
	Logan (Meru Cabs)	Diesel	-	DIN60L(56219-L2)
	Marshal Commander 7505	Diesel	70D26R	65D26R / 90D26R
	Marshall (New)	Diesel	70D26R	65D26R / 90D26R
	Marshall (Old)	Diesel	95D31R	95D31R
	Maxx	Diesel	70D26R	65D26R / 90D26R
	MM 540	Diesel	70D26R	65D26R / 90D26R
	MM 550	Diesel	70D26R	65D26R / 90D26R
	MM IZS	Diesel	70D26R	65D26R / 90D26R
	Nuvo Sport	Diesel	70D26R	65D26R / 90D26R
	Pick-up CL500	Diesel	70D26R	65D26R / 90D26R
	Quanto	Diesel	70D26R	65D26R / 90D26R
	Sanyong - Rexton RX270	Diesel	-	105D31R
	Sanyong - Rexton RX6	Diesel	-	105D31R
	Scorpio	Diesel	70D26R	65D26R / 90D26R
	Thar	Diesel	70D26R	65D26R / 90D26R
	TUV300 - T4 / T6	Diesel	-	90D26R
	TUV300 - T4 / T6	Diesel	85D23R	85D23R
	Xylo / Xylo Pick-up	Diesel	70D26R	65D26R / 90D26R



FITMENT CHART - 4 Wheeler /// CARs + VANS + UVs + MUVs + SUVs

NAME OF MANUFACTURER	VEHICLE MODEL	FUEL	AKIYO PART NO.	HITACHI PART NO.
Maruti Suzuki India Limited	800 STD - AC / MPFI	Petrol / LPG / CNG	36B20R / 40B20R	40B19R / 42B19R
	800 STD - Non (AC/LPG/CNG)	Petrol	36B20R / 40B20R	40B19R / 42B19R
	Alto	Petrol / LPG / CNG	36B20L / 40B20L	40B19L / 42B19L
	Alto 800	Petrol / LPG / CNG	36B20L / 40B20L	40B19L / 42B19L
	Alto 800 (Non-LPG / Non-CNG)	Petrol	36B20R / 40B20R	40B19R / 42B19R
	Alto K10 (New)	Petrol / LPG / CNG	36B20R / 40B20R	40B19R / 42B19R
	Alto K10 (Non-LPG / Non-CNG)	Petrol	36B20R / 40B20R	40B19R / 42B19R
	Alto Xcite	Petrol / LPG / CNG	36B20L / 40B20L	40B19L / 42B19L
	Altura	Petrol / LPG / CNG	36B20L / 40B20L	40B19L / 42B19L
	A-Star	Petrol / LPG / CNG	36B20R / 40B20R	40B19R / 42B19R
	Baleno	Diesel	DIN50L	DIN50L(55066-L1)
	Baleno	Petrol / LPG / CNG	36B20L / 40B20L	40B19L / 42B19L
	Celerio	Diesel	55B24L(S)	46B24L(S) / 60B24L(S)
	Celerio	Petrol / LPG / CNG	36B20L / 40B20L	40B19L / 42B19L
	Ciaz	Diesel	-	DIN70L / DIN74L(57412-L3)
	Ciaz	Petrol / LPG / CNG	36B20L / 40B20L	40B19L / 42B19L
	Eeco	Petrol / LPG / CNG	36B20L / 40B20L	40B19L / 42B19L
	Ertiga	Diesel	DIN66L	DIN66L(56638-L3)
	Ertiga	Petrol / LPG / CNG	H36B20L / 40B20L	40B19L / 42B19L
	Ertiga Hybrid	Diesel	-	DIN70L / DIN74L(57412-L3)
	Esteem	Petrol / LPG / CNG	36B20R / 40B20R	40B19R / 42B19R
	Grand Vitara	Petrol	55B24L(S)	46B24L(S) / 60B24L(S)
	Gypsy	Petrol / LPG / CNG	36B20R / 40B20R	40B19R / 42B19R
	Gypsy King	Petrol / LPG / CNG	36B20R / 40B20R	40B19R / 42B19R
	Ignis	Diesel	DIN50L	DIN50L(55066-L1)
	Ignis	Petrol / LPG / CNG	36B20L / 40B20L	40B19L / 42B19L
	Kizashi	Diesel	DIN66LH	DIN66L / DIN74L(57412-L3)
	Maruti 1000	Petrol / LPG / CNG	36B20R / 40B20R	40B19R / 42B19R
	Omni 8 Seater	Petrol / LPG / CNG	36B20R / 40B20R	40B19R / 42B19R
	Omni Ambulance	Petrol / LPG / CNG	36B20R / 40B20R	40B19R / 42B19R
	Omni Cargo	Petrol / LPG / CNG	36B20R / 40B20R	40B19R / 42B19R
	Ritz	Diesel	DIN66L	DIN66L(56638-L3)
	Ritz	Petrol / LPG / CNG	H36B20R / 40B20R	40B19R / 42B19R



FITMENT CHART - 4 Wheeler /// CARs + VANs + UVs + MUVs + SUVs

NAME OF MANUFACTURER	VEHICLE MODEL	FUEL	AKIYO PART NO.	HITACHI PART NO.
Maruti Suzuki India Limited	Ritz (Non-LPG / Non-CNG)	Petrol	36B20R / 40B20R	40B19R / 42B19R
	Ritz Elate	Petrol / LPG / CNG	36B20R / 40B20R	40B19R / 42B19R
	S-Cross (CROSSOVER) 1.3L	Diesel	DIN50L	DIN50L(55066-L1)
	S-Cross (CROSSOVER) 1.6L	Diesel	DIN66LH	DIN66L(56638-L3)
	Swift (New)	Diesel	DIN50L	DIN50L(55066-L1)
	Swift (Old)	Diesel	DIN66LH	DIN66L(56638-L3)
	Swift (Old)	Petrol / LPG / CNG	36B20R / 40B20R	40B19R / 42B19R
	Swift 1.2L	Petrol / LPG / CNG	36B20L / 40B20L	40B19L / 42B19L
	Swift Dzire (New)	Petrol / LPG / CNG	36B20L / 40B20L	40B19L / 42B19L
	Swift Dzire (Old)	Diesel	DIN66LH	DIN66L(56638-L3)
	Swift Dzire (Tour)	Diesel	DIN66LH	DIN66L / DIN74L(57412-L3)
	Swift Dzire 1.3L	Petrol / LPG / CNG	36B20R / 40B20R	40B19R / 42B19R
	SX4	Diesel	DIN66LH	DIN66L(56638-L3)
	SX4	Petrol / LPG / CNG	36B20R / 40B20R	40B19R / 42B19R
	Vitara Brezza	Diesel	DIN50L	DIN50L(55066-L1)
	Wagon R	Petrol / LPG / CNG	36B20L / 40B20L	40B19L / 42B19L
	Wagon R (DUO)	Petrol / LPG / CNG	36B20L / 40B20L	40B19L / 42B19L
	Wagon R (STINGRAY)	Petrol / LPG / CNG	36B20L / 40B20L	40B19L / 42B19L
Zen	Petrol / LPG / CNG	36B20R / 40B20R	40B19R / 42B19R	
Zen Estilo	Petrol / LPG / CNG	36B20L / 40B20L	40B19L / 42B19L	
Mercedes-Benz India Pvt. Ltd.	A Class	Petrol / Diesel	DIN80L	DIN80L(58014-LB4)
	C Class	Petrol / Diesel	-	DIN100L(60038-L5)
	E Class	Petrol / Diesel	-	DIN100L(60038-L5)
	G Class	Diesel	-	DIN100L(60038-L5)
	GL Class	Diesel	-	DIN100L(60038-L5)
	M Class	Diesel	-	DIN100L(60038-L5)
	R Class	Diesel	-	DIN100L(60038-L5)
	S Class	Petrol / Diesel	-	DIN100L(60038-L5)
	SLS Class	Diesel	-	DIN100L(60038-L5)
	100	Petrol / Diesel	-	105D31R
	140	Petrol / Diesel	-	105D31R



FITMENT CHART - 4 Wheeler /// CARs + VANs + UVs + MUVs + SUVs

NAME OF MANUFACTURER	VEHICLE MODEL	FUEL	AKIYO PART NO.	HITACHI PART NO.
Nissan Motor India Pvt. Ltd. / Nissan-Datsun, India	Datsun Go	Petrol	36B20L / 40B20L	40B19L / 42B19L
	Datsun Go+	Petrol	36B20L / 40B20L	40B19L / 42B19L
	Evalia	Diesel	70D26L	65D26L / 90D26L
	Micra 1.2L	Petrol	36B20L / 40B20L	40B19L / 42B19L
	Micra 1.5L (New)	Diesel	DIN50L	DIN50L(55066-L1)
	Micra 1.5L (Old)	Diesel	-	DIN60L(56219-L2)
	Micra CVT Automatic	Diesel	85D23L	80D23L
	Sunny 1.2L	Petrol	36B20L / 40B20L	40B19L / 42B19L
	Sunny 1.5L	Diesel	DIN50L	DIN50L(55066-L1)
	Teana	Petrol	DIN50L	DIN50L(55066-L1)
	Terrano	Diesel	-	DIN60L(56219-L2)
	X-Trail	Diesel	-	DIN60L(56219-L2)
Porsche, India	911 Carrera	Petrol	-	DIN100L(60038-L5)
	Cayenne UV	Petrol	-	DIN100L(60038-L5)
	GT2	Petrol	-	DIN100L(60038-L5)
	Turbo	Petrol	-	DIN100L(60038-L5)
Premier Limited	Padmini	Diesel	70D26R	65D26R / 90D26R
	Padmini	Petrol / LPG / CNG	DIN44LH	DIN45L(54459-L1) / DIN44LH
	Rio1.2L RV2PG	Diesel	55B24L(S)	46B24L(S) / 60B24L(S)
	Rio1.5L RV2PG	Diesel	55B24L(S)	46B24L(S) / 60B24L(S)
	Roadstar	Diesel	70D26R	65D26R / 90D26R
	Sigma	Diesel	70D26R	65D26R / 90D26R
Renault INDIA Pvt. Ltd.	Duster HP-85-PS	Diesel	-	DIN60L(56219-L2)
	Duster THP-110-PS	Diesel	DIN50L	DIN50L(55066-L1)
	Fluence 1.5L	Diesel	-	DIN60L(56219-L2)
	Fluence 2.0L	Diesel	-	DIN60L(56219-L2)
	Koleos	Diesel	-	DIN74L(57412-L3)
	Kwid	Petrol	40B20L(BH)	-
	Lodgy	Diesel	-	DIN74L(57412-L3)
	Pulse 1.2L	Petrol	36B20L / 40B20L	40B19L / 42B19L
	Pulse 1.5L	Diesel	-	DIN60L(56219-L2)
	Pulse 1.5L	Diesel	DIN50L	DIN50L(55066-L1)
	Scala 1.5L (Pvt.)	Diesel	DIN50L	DIN50L(55066-L1)
	Scala 1.5L (Taxi)	Diesel	-	DIN60L(56219-L2)



FITMENT CHART - 4 Wheeler /// CARs + VANs + UVs + MUVs + SUVs

NAME OF MANUFACTURER	VEHICLE MODEL	FUEL	AKIYO PART NO.	HITACHI PART NO.
Skoda Auto India Pvt. Ltd.	Ambience	Diesel	-	DIN60L(56219-L2)
	Combi	Diesel	-	DIN60L(56219-L2)
	Elegance	Diesel	-	DIN60L(56219-L2)
	Fabia	Diesel	-	DIN60L(56219-L2)
	Fabia	Petrol	DIN44LH	DIN45L(54459-L1) / DIN44LH
	Laura	Diesel	-	DIN60L(56219-L2)
	Octavia	Petrol / Diesel	-	DIN60L(56219-L2)
	Octavia RIDER 1.8 TPI	Petrol	-	DIN60L(56219-L2)
	Octavia RIDER 1.9 TDI	Diesel	-	DIN60L(56219-L2)
	Rapid	Diesel	-	DIN60L(56219-L2)
	Rapid	Petrol	DIN44LH	DIN45L(54459-L1) / DIN44LH
	Rider 1.9L	Diesel	-	DIN74L(57412-L3)
	Superb	Petrol / Diesel	-	DIN60L(56219-L2)
	Yeti	Petrol / Diesel	-	DIN60L(56219-L2)
	Tata Motors Limited	Aria 2.2L	Diesel	-
Bolt		Petrol	DIN44R	-
Bolt BSIII		Diesel	-	DIN55R(55565-L2)
Estate		Diesel	95D31R	95D31R / 105D31R
Hexa		Diesel	-	DIN70L / DIN74L(57412-L3)
Indica BSII		Petrol	36B20R / 40B20R	40B19R / 42B19R
Indica BSIII		Diesel	-	DIN55R(55565-L2)
Indica Cab BSII		Diesel	70D26R	65D26R / 90D26R
Indica Cab BSIII		Diesel	-	DIN55R(55565-L2)
Indica DLE BSII		Diesel	70D26R	65D26R / 90D26R
Indica Vista		Petrol	DIN44R	-
Indica Vista BSIII		Diesel	-	DIN55R(55565-L2)
Indica Xeta		Petrol	DIN44R	-
Indica Zeta BSIII		Diesel	-	DIN55R(55565-L2)
Indigo BSII		Petrol	36B20R / 40B20R	40B19R / 42B19R
Indigo CRDI BSII		Diesel	70D26R	65D26R / 90D26R
Indigo Manza		Petrol	DIN44R	-
Indigo Manza BSIII		Diesel	-	DIN55R(55565-L2)



FITMENT CHART - 4 Wheeler /// CARs + VANs + UVs + MUVs + SUVs

NAME OF MANUFACTURER	VEHICLE MODEL	FUEL	AKIYO PART NO.	HITACHI PART NO.
Tata Motors Limited	Indigo Marina	Petrol	36B20R / 40B20R	40B19R / 42B19R
	Indigo Marina BSIII	Diesel	-	DIN55R(55565-L2)
	Indigo Marina CRDI BSII	Diesel	70D26R	65D26R / 90D26R
	Indigo XL BSIII	Diesel	-	DIN55R(55565-L2)
	Jaguar XF	Petrol / Diesel	-	DIN88L(58827-L5)
	Jaguar XJ	Petrol / Diesel	-	DIN88L(58827-L5)
	Magic IRIS	Diesel	70D26L	65D26L / 90D26L
	Mobile	Diesel	95D31R	95D31R / 105D31R
	Movus	Diesel	-	105D31R
	Nano	Petrol	36B20R / 40B20R	40B19R / 42B19R
	Safari	Diesel	95D31R	95D31R / 105D31R
	Safari DICOR	Diesel	-	105D31R
	Safari Non DICOR	Diesel	95D31R	95D31R / 105D31R
	Safari Storme	Diesel	-	105D31L
	Sierra	Diesel	95D31R	95D31R / 105D31R
	Spacio	Diesel	95D31R	95D31R / 105D31R
	Storme	Diesel	95D31L	95D31L / 105D31L
	Sumo	Diesel	95D31R	95D31R / 105D31R
	Sumo Gold	Diesel	95D31R	95D31R / 105D31R
	Sumo Grande	Diesel	-	105D31R
	Sumo Victa	Diesel	95D31R	95D31R / 105D31R
	Tiago	Diesel	DIN50L	DIN50L(55066-L1)
	Venture 1.4LTR	Diesel	70D26R	65D26R / 90D26R
	Winger	Diesel	-	105D31L
	Winger (Non AC)	Diesel	95D31R	95D31R / 105D31R
	Xenon CRDI	Diesel	95D31R	95D31R / 105D31R
	Xenon XT	Diesel	-	105D31L
	Zest	Petrol	DIN44R	-
	Zest XTA-F-TRONIC BSIII	Diesel	-	DIN55R(55565-L2)
	Zica BSIII	Diesel	-	DIN55R(55565-L2)
	Zica BSIII	Diesel	DIN50L	DIN50L(55066-L1)



FITMENT CHART - 4 Wheeler /// CARs + VANs + UVs + MUVs + SUVs

NAME OF MANUFACTURER	VEHICLE MODEL	FUEL	AKIYO PART NO.	HITACHI PART NO.
Toyota Motor Corporation - India	Camry	Petrol	55B24L(S)	46B24L(S) / 60B24L(S)
	Camry	Petrol	85D23L	55D23L / 80D23L
	Corolla	Petrol	36B20L / 40B20L	40B19L / 42B19L
	Corolla 1.4L	Diesel	85D23L	55D23L / 80D23L
	Corolla Altis	Diesel	85D23L	55D23L / 80D23L
	Corolla Altis	Petrol	55B24L(S)	46B24L(S) / 60B24L(S)
	Etios	Diesel	85D23L	55D23L / 80D23L
	Etios	Petrol	36B20L / 40B20L	40B19L / 42B19L
	Etios Liva	Diesel	85D23L	55D23L / 80D23L
	Etios Liva	Petrol	36B20L / 40B20L	40B19L / 42B19L
	Fortuner	Diesel	-	105D31L
	Innova (New) Special Addition	Diesel	70D26L	65D26L / 90D26L
	Innova Crysta	Diesel	DIN66L	DIN66L(56638-L3)
	Innova G1	Petrol	36B20L / 40B20L	40B19L / 42B19L
	Innova G1 / G4 / V	Diesel	70D26L	65D26L / 90D26L
	Innova G1 / G4 / V	Diesel	85D23L	80D23L
	Land Cruiser	Diesel	-	105D31L / 105D31R
	Lexus	Diesel	-	105D31L
	Prado	Diesel	-	105D31L / 105D31R
	Qualis	Diesel	70D26L	65D26L / 90D26L
Qualis	Diesel	85D23L	80D23L	
Volkswagen India Private Limited	Ameo 1.2L MPI	Petrol	DIN44LH	DIN45L(54459-L1) / DIN44LH
	Beetle 2.0L	Petrol	-	DIN60L(56219-L2)
	Jetta 1.4L	Petrol	DIN44LH	DIN45L(54459-L1) / DIN44LH
	Jetta 2.0L	Diesel	-	DIN60L(56219-L2)
	Passat 2.0L	Diesel	-	DIN60L(56219-L2)
	Passat 2.0LTDI	Diesel	-	DIN60L(56219-L2)
	Phaeton 3.6LTR. V6	Petrol	-	DIN60L(56219-L2)
	Polo 1.2L	Diesel	-	DIN60L(56219-L2)
	Polo 1.2L	Petrol	DIN44LH	DIN45L(54459-L1) / DIN44LH
	Touareg 4.2 V8	Diesel	-	DIN100L(60038-L5)
	Touareg TDIV 10	Diesel	-	DIN100L(60038-L5)
	Vento	Petrol	DIN44LH	DIN45L(54459-L1) / DIN44LH
	Vento 1.6L	Diesel	-	DIN60L(56219-L2)



FITMENT CHART /// TRACTORS + AGRICULTURAL VEHICLES

NAME OF MANUFACTURER	VEHICLE MODEL	FUEL	AKIYO PART NO.	HITACHI PART NO.
ACE / Action Construction Equipment Ltd.	ACE DI 350 NG	Diesel	75D31R	-
	ACE DI 450 NG	Diesel	TRCT L 090	-
	ACE DI 450 Star	Diesel	TRCT L 090	-
	ACE DI 550 NG	Diesel	TRCT L 090	-
	ACE DI 550 Star	Diesel	TRCT L 090	-
	ACE DI 6565	Diesel	TRCT L 090	-
	ACE DI 854 NG	Diesel	75D31R	-
Captain Tractors Pvt. Ltd.	CAPTAIN 120 DI - 15 H.P.	Diesel	75D31R	-
	CAPTAIN 120 DI 4WD - 15 H.P.	Diesel	75D31R	-
	CAPTAIN 200 DI - 20 H.P.	Diesel	75D31R	-
	CAPTAIN 200 DI 4WD - 20 H.P.	Diesel	75D31R	-
	CAPTAIN 250 DI - 25 H.P.	Diesel	75D31R	-
	CAPTAIN 250 DI 4WD - 25 H.P.	Diesel	75D31R	-
	CAPTAIN DI 2600 4WD	Diesel	75D31R	-
ESCORTS Agri Machinery	Farmtrac 30 (30 HP)	Diesel	75D31R	-
	Farmtrac 35 (35 HP)	Diesel	75D31R	-
	Farmtrac 40	Diesel	TRCT L 090	-
	Farmtrac 45 Classic (45 HP)	Diesel	TRCT L 090	-
	Farmtrac 45 Smart (45 HP)	Diesel	TRCT L 090	-
	Farmtrac 450	Diesel	TRCT L 090	-
	Farmtrac 475	Diesel	TRCT L 090	-
	Farmtrac 50	Diesel	TRCT L 090	-
	Farmtrac 60	Diesel	TRCT L 090	-
	Farmtrac 60 EPI / 60 Classic (47 HP)	Diesel	TRCT L 090	-
	Farmtrac 6050 Executive (50 HP)	Diesel	TRCT L 090	-
	Farmtrac 6055 (T20 Classic)	Diesel	TRCT L 090	-
	Farmtrac 6060 Executive (60 HP)	Diesel	TRCT L 090	-
	Farmtrac 6065 Executive (65 HP)	Diesel	TRCT L 090	-
	Farmtrac 65 EPI	Diesel	TRCT L 090	-
	Farmtrac 70	Diesel	TRCT L 090	-
	Farmtrac HERO	Diesel	TRCT L 090	-
Farmtrac XP-37 Champion (37 HP)	Diesel	TRCT L 090	-	



FITMENT CHART /// TRACTORS + AGRICULTURAL VEHICLES

NAME OF MANUFACTURER	VEHICLE MODEL	FUEL	AKIYO PART NO.	HITACHI PART NO.
ESCORTS Agri Machinery	Farmtrac XP-41 Champion (41 HP)	Diesel	TRCT L 090	-
	Powertrac 429	Diesel	TRCT L 090	-
	Powertrac 430	Diesel	TRCT L 090	-
	Powertrac 434 (33.5 HP)	Diesel	TRCT L 090	-
	Powertrac 434 DS (34 HP)	Diesel	TRCT L 090	-
	Powertrac 434 Plus (37 HP)	Diesel	TRCT L 090	-
	Powertrac 439 DS (41 HP)	Diesel	TRCT L 090	-
	Powertrac 439 Plus (41 HP)	Diesel	TRCT L 090	-
	Powertrac 440	Diesel	TRCT L 090	-
	Powertrac 445 DS (45 HP)	Diesel	TRCT L 090	-
	Powertrac 4455 BT (50 HP)	Diesel	TRCT L 090	-
	Powertrac 4455 BT Plus (60 HP)	Diesel	TRCT L 090	-
	Powertrac 455	Diesel	TRCT L 090	-
	Powertrac ALT 3500 (37 HP)	Diesel	TRCT L 090	-
	Powertrac ALT 4000 (41 HP)	Diesel	TRCT L 090	-
	Powertrac Euro 37 (37 HP)	Diesel	TRCT L 090	-
	Powertrac Euro 41 (41 HP)	Diesel	TRCT L 090	-
	Powertrac Euro 41 Plus (45 HP)	Diesel	TRCT L 090	-
	Powertrac Euro 4455 (50 HP)	Diesel	TRCT L 090	-
	Powertrac Euro 45 (45 HP)	Diesel	TRCT L 090	-
	Powertrac Euro 50 (50 HP)	Diesel	TRCT L 090	-
	Powertrac Euro 60 (60 HP)	Diesel	TRCT L 090	-
	Standard ESCORT 325	Diesel	75D31R	-
	Standard ESCORT 325 JOSH	Diesel	75D31R	-
	Standard ESCORT 335	Diesel	75D31R	-
	Standard ESCORT 335 JOSH	Diesel	75D31R	-
	Standard ESCORT 340	Diesel	75D31R	-
	Standard ESCORT 345	Diesel	75D31R	-
	Standard ESCORT 355	Diesel	75D31R	-



FITMENT CHART /// TRACTORS + AGRICULCHURAL VEHICLES

NAME OF MANUFACTURER	VEHICLE MODEL	FUEL	AKIYO PART NO.	HITACHI PART NO.
Force Motors Ltd.	BALWAN 330	Diesel	75D31R	-
	BALWAN 400	Diesel	75D31R	-
	BALWAN 450	Diesel	75D31R	-
	BALWAN 500	Diesel	75D31R	-
	BALWAN 550	Diesel	75D31R	-
	OX 25 ORCHARD DLX	Diesel	75D31R	-
	OX 25 ORCHARD Mini	Diesel	75D31R	-
Hindustan Machine Tools / HMT Tractors Ltd.	HMT 2522 DX - 25 H.P.	Diesel	75D31R	-
	HMT 2522 FX - 25 H.P.	Diesel	75D31R	-
	HMT 2522 OS - 25 H.P.	Diesel	75D31R	-
	HMT 3522 CS - 35 H.P.	Diesel	75D31R	-
	HMT 3522 DX - 35 H.P.	Diesel	75D31R	-
	HMT 3522 FX - 35 H.P.	Diesel	75D31R	-
	HMT 3522 FX - 35 H.P.	Diesel	TRCT L 090	-
	HMT 4022 - 40 H.P.	Diesel	TRCT L 090	-
	HMT 4922 - 50 H.P.	Diesel	TRCT L 090	-
	HMT 4922 DX - 50 H.P.	Diesel	TRCT L 090	-
	HMT 5022 DX - 50 H.P.	Diesel	TRCT L 090	-
	HMT 5022 RX - 50 H.P.	Diesel	TRCT L 090	-
	HMT 5911 - 60 H.P.	Diesel	TRCT L 105	-
	HMT 6522 TC - 60/65 H.P.	Diesel	TRCT L 105	-
	HMT 7511 - 75 H.P.	Diesel	TRCT L 105	-
	HMT 7522 - 75 H.P.	Diesel	TRCT L 105	-
Indo Farm Equipment Limited	INDO FARM 1026 - 26 H.P. / 4WD	Diesel	75D31R	-
	INDO FARM 2030 DI - 34 H.P.	Diesel	75D31R	-
	INDO FARM 2035 DI - 38 H.P.	Diesel	75D31R	-
	INDO FARM 2040 DI - 40 H.P.	Diesel	TRCT L 090	-
	INDO FARM 2042 DI - 45 H.P.	Diesel	TRCT L 090	-
	INDO FARM 2050 DI - 50 H.P.	Diesel	TRCT L 090	-
	INDO FARM 2060 DI - 60 H.P.	Diesel	TRCT L 090	-
	INDO FARM 3035 DI - 38 H.P.	Diesel	75D31R	-
	INDO FARM 3040 DI - 45 H.P.	Diesel	TRCT L 090	-



FITMENT CHART /// TRACTORS + AGRICULCHURAL VEHICLES

NAME OF MANUFACTURER	VEHICLE MODEL	FUEL	AKIYO PART NO.	HITACHI PART NO.
Indo Farm Equipment Limited	INDO FARM 3048 DI - 50 H.P.	Diesel	TRCT L 090	-
	INDO FARM 3050 DI - 50 H.P.	Diesel	TRCT L 090	-
	INDO FARM 3052 DI - 55 H.P.	Diesel	TRCT L 090	-
	INDO FARM 3055 DI - 60 H.P.	Diesel	TRCT L 105	-
	INDO FARM 3055 NV - 55 H.P.	Diesel	TRCT L 105	-
	INDO FARM 3065 DI - 65 H.P.	Diesel	TRCT L 105	-
	INDO FARM 4175 DI / 4WD - 75 H.P.	Diesel	TRCT L 090	-
	INDO FARM 4190 DI / 4WD - 90 H.P.	Diesel	TRCT L 090	-
ITL / International Tractors Limited / SONALIKA	DI 730 II - 30 HP (SONALIKA BAAGBAN)	Diesel	75D31R	-
	DI 730 III - 32 H.P.	Diesel	75D31R	-
	DI 732 - 32 H.P.	Diesel	75D31R	-
	DI 734 S1 - 34 H.P.	Diesel	75D31R	-
	DI 734 S3 - 34 H.P.	Diesel	75D31R	-
	DI 735 II - 35 H.P.	Diesel	75D31R	-
	DI 740 II S3 SUPER - 40 H.P.	Diesel	75D31R	-
	DI 740 III S3 SERIES - 42 H.P.	Diesel	TRCT L 090	-
	DI 745 - 45 H.P.	Diesel	75D31R	-
	DI 745 III SERIES - 47 H.P.	Diesel	TRCT L 090	-
	DI 750 II - 50 H.P.	Diesel	TRCT L 090	-
	DI 750 III - 55 HP (SONALIKA)	Diesel	TRCT L 090	-
	DI 755 - 55 H.P.	Diesel	TRCT L 090	-
	DI 760 SERIES - 60 H.P.	Diesel	TRCT L 090	-
	SONALIKA DI35 S3 SERIES - 35 H.P.	Diesel	TRCT L 090	-
	SONALIKA RENAULT SERIES - 316	Diesel	TRCT L 105	-
SONALIKA RENAULT SERIES - 326	Diesel	TRCT L 105	-	
SONALIKA RENAULT SERIES - 336	Diesel	TRCT L 105	-	
John Deere India Pvt. Ltd.	5014 - 45 HP	Diesel	TRCT L 090	-
	5036 C - 35 HP	Diesel	TRCT L 090	-
	5036 D - 36 HP	Diesel	TRCT L 090	-
	5038 D - 38 HP	Diesel	TRCT L 090	-
	5039 C - 39 HP	Diesel	TRCT L 090	-
	5039 D - 39 HP	Diesel	TRCT L 090	-
	5041 C - 41 HP	Diesel	TRCT L 090	-



FITMENT CHART /// TRACTORS + AGRICULTURAL VEHICLES

NAME OF MANUFACTURER	VEHICLE MODEL	FUEL	AKIYO PART NO.	HITACHI PART NO.
John Deere India Pvt. Ltd.	5042 C - 42 HP	Diesel	TRCT L 090	-
	5042 D - 42 HP	Diesel	TRCT L 090	-
	5045 D - 45 HP	Diesel	TRCT L 090	-
	5050 D - 50 HP	Diesel	TRCT L 090	-
	5050 E - 50 HP	Diesel	TRCT L 090	-
	5055 E - 55 HP	Diesel	TRCT L 090	-
	5060 E - 60 HP	Diesel	TRCT L 105	-
	5065 E - 65 HP	Diesel	TRCT L 105	-
	5075 E 4WD - 75 HP	Diesel	TRCT L 105	-
	5103 - 50 HP	Diesel	TRCT L 090	-
	5103S - 42 HP	Diesel	TRCT L 090	-
	5204 - 50 HP	Diesel	TRCT L 090	-
	5210 - 50 HP	Diesel	TRCT L 090	-
	5310 - 55 HP	Diesel	TRCT L 105	-
	5610 MSWP - 75 HP	Diesel	TRCT L 105	-
5725 MFWD - 75 HP	Diesel	TRCT L 105	-	
Kubota Agricultural Machinery India Pvt. Ltd.	A211N - NARROW - 21 HP	Diesel	55B24L(S)	46B24L(S) / 60B24L(S)
	B2420 - 24 HP	Diesel	55B24L(S)	46B24L(S) / 60B24L(S)
	B2441 - LITTLE GIANT - 24 HP	Diesel	55B24L(S)	46B24L(S) / 60B24L(S)
	L3408 - 34.7 HP	Diesel	70D26R	65D26R / 90D26R
	L4508 - ALL ROUNDER - 45 HP	Diesel	70D26R	65D26R / 90D26R
	MU4501 - 45 HP	Diesel	70D26R	65D26R / 90D26R
	MU5501 - Powerful e-CDIS Engine - 55 HP	Diesel	70D26R	65D26R / 90D26R
M&M Ltd. (Farm Equipment Sector)	Arjun 445 D - 42 HP	Diesel	TRCT L 090	-
	Arjun 555 DI - 57 HP	Diesel	TRCT L 090	-
	Arjun International - 57 HP	Diesel	TRCT L 090	-
	Arjun Novo 605 DI MS - 50 HP	Diesel	TRCT L 090	-
	Arjun Novo 605 DI-I - 57 HP	Diesel	TRCT L 090	-
	Arjun Novo 605 DI-I AC Cabin - 57 HP	Diesel	TRCT L 090	-
	Arjun Novo 605 DI-I-4WD - 57 HP	Diesel	TRCT L 090	-
	Arjun Novo 605 DI-PS - 52 HP	Diesel	TRCT L 090	-
	Bhoomiputra 265 DI 3CYL - 30 HP	Diesel	TRCT L 090	-



FITMENT CHART /// TRACTORS + AGRICULCHURAL VEHICLES

NAME OF MANUFACTURER	VEHICLE MODEL	FUEL	AKIYO PART NO.	HITACHI PART NO.
M&M Ltd. (Farm Equipment Sector)	Bhoomiputra 275 DI TU 3CYL - 39 HP	Diesel	TRCT L 090	-
	Bhoomiputra 475 DI 4CYL - 42 HP	Diesel	TRCT L 090	-
	Bhoomiputra 575 DI 4CYL - 45 HP	Diesel	TRCT L 090	-
	JIVO 245 DI-4WD - 24 HP	Diesel	TRCT L 090	-
	Mahindra 245 DI Orchard - 24 HP	Diesel	TRCT L 090	-
	Mahindra 255 DI Power Plus - 25 HP	Diesel	TRCT L 090	-
	Mahindra 265 DI Power Plus - 30 HP	Diesel	TRCT L 090	-
	Mahindra 275 Eco - 35 HP	Diesel	TRCT L 090	-
	Mahindra 295 DI - 39 HP	Diesel	TRCT L 090	-
	Mahindra 595 DI - 50 HP	Diesel	TRCT L 090	-
	Sarpanch 265 DI 3CYL - 30 HP	Diesel	TRCT L 090	-
	Sarpanch 265 DI TU 3CYL - 30 HP	Diesel	TRCT L 090	-
	Sarpanch 475 DI 4CYL - 42 HP	Diesel	TRCT L 090	-
	Sarpanch 575 DI 4CYL - 45 HP	Diesel	TRCT L 090	-
	Sarpanch 585 DI 4CYL - 50 HP	Diesel	TRCT L 090	-
	YUVO 265 DI - 32 HP	Diesel	TRCT L 090	-
	YUVO 275 DI - 35 HP	Diesel	TRCT L 090	-
	YUVO 415 DI - 40 HP	Diesel	TRCT L 090	-
	YUVO 475 DI - 42 HP	Diesel	TRCT L 090	-
	YUVO 575 DI - 45 HP	Diesel	TRCT L 090	-
Yuvraj 215 NXT - 15 HP	Diesel	70D26L	65D26L / 90D26L	
Yuvraj 215 NXT - 15 HP	Diesel	70D26R	65D26R / 90D26R	
M&M Ltd. (Swaraj Division - Punjab Tractor Ltd.)	Swaraj 717 (15 HP)	Diesel	70D26L	65D26L / 90D26L
	Swaraj 717 (15 HP)	Diesel	70D26R	65D26R / 90D26R
	Swaraj 722 FE (20-25 HP)	Diesel	75D31R	-
	Swaraj 724 FE (25-30 HP)	Diesel	TRCT L 090	-
	Swaraj 724 XM (25-30 HP)	Diesel	TRCT L 090	-
	Swaraj 724 XM Orchard (25-30 HP)	Diesel	TRCT L 090	-
	Swaraj 724 XM Orchard NT (25-30 HP)	Diesel	TRCT L 090	-
	Swaraj 733 FE (30-35 HP)	Diesel	TRCT L 090	-
	Swaraj 735 FE (35-40 HP)	Diesel	TRCT L 090	-
	Swaraj 735 XM (35-40 HP)	Diesel	TRCT L 090	-



FITMENT CHART /// TRACTORS + AGRICULTURAL VEHICLES

NAME OF MANUFACTURER	VEHICLE MODEL	FUEL	AKIYO PART NO.	HITACHI PART NO.
M&M Ltd. (Swaraj Division - Punjab Tractor Ltd.)	Swaraj 735 XT (40 HP)	Diesel	TRCT L 090	-
	Swaraj 743 FE (40-45 HP)	Diesel	TRCT L 090	-
	Swaraj 744 FE (45-50 HP)	Diesel	TRCT L 090	-
	Swaraj 744 XM (45-50 HP)	Diesel	TRCT L 090	-
	Swaraj 825 XM (25-30 HP)	Diesel	TRCT L 090	-
	Swaraj 834 FE (35 HP)	Diesel	TRCT L 090	-
	Swaraj 834 XM (35 HP)	Diesel	TRCT L 090	-
	Swaraj 841 XM (42-45 HP)	Diesel	TRCT L 090	-
	Swaraj 843 XM (42-45 HP)	Diesel	TRCT L 090	-
	Swaraj 843 XM OSM (42-45 HP)	Diesel	TRCT L 090	-
	Swaraj 855 FE (50-55 HP)	Diesel	TRCT L 105	-
	Swaraj 855 FE (Super Power)	Diesel	TRCT L 105	-
	Swaraj 855 XM (50-55 HP)	Diesel	TRCT L 105	-
	Swaraj 960 FE (55-60 HP)	Diesel	TRCT L 105	-
Swaraj 975 FE	Diesel	TRCT L 105	-	
Mahindra Gujarat Tractors Limited	Shaktimaan 312	Diesel	75D31R	-
	Shaktimaan 35 High Speed	Diesel	TRCT L 090	-
	Shaktimaan 35 High Torque	Diesel	TRCT L 090	-
	Shaktimaan 40 CM	Diesel	TRCT L 090	-
	Shaktimaan 40 SLX	Diesel	TRCT L 090	-
	Shaktimaan 45 CM	Diesel	TRCT L 090	-
	Shaktimaan 45 SLX	Diesel	TRCT L 090	-
	Shaktimaan 4501 B	Diesel	TRCT L 090	-
	Shaktimaan 614	Diesel	135F51	N120
	Shaktimaan 614 PS	Diesel	135F51	N120
Shaktimaan 614 Road Star	Diesel	135F51	N120	
New Holland Fiat (India) Pvt. Ltd. / CNH Industrial (India) Pvt. Ltd.	EXCEL 6010 - 60 HP	Diesel	TRCT L 105	-
	EXCEL 8010 - 80 HP	Diesel	TRCT L 105	-
	EXCEL 9010 - 90 HP	Diesel	TRCT L 105	-
	NH 3030	Diesel	75D31R	-
	NH 3130	Diesel	75D31R	-
	NH 3230 - 42 HP	Diesel	75D31R	-



FITMENT CHART /// TRACTORS + AGRICULCHURAL VEHICLES

NAME OF MANUFACTURER	VEHICLE MODEL	FUEL	AKIYO PART NO.	HITACHI PART NO.
New Holland Fiat (India) Pvt. Ltd. / CNH Industrial (India) Pvt. Ltd.	NH 3600 - 35 HP	Diesel	75D31R	-
	NH 3600-2 TX - 50 Cat HP	Diesel	TRCT L 090	-
	NH 3600-2 TX All Rounder - 50 Cat HP	Diesel	TRCT L 090	-
	NH 3630 TX PLUS+ - 55 HP	Diesel	TRCT L 090	-
	NH 3630 TX SUPER - 50 HP	Diesel	TRCT L 090	-
	NH 525	Diesel	TRCT L 090	-
	NH 5500 Turbo Super - 55 HP	Diesel	TRCT L 090	-
	NH 6500 Turbo Super - 65 HP	Diesel	TRCT L 105	-
	NH 7500 Turbo Super - 75 HP	Diesel	TRCT L 105	-
	TD5.90 - 90 HP	Diesel	TRCT L 105	-
Preet Tractors Pvt. Ltd.	PREET 3549 - 35 HP	Diesel	75D31R	-
	PREET 4049 - 40 HP	Diesel	75D31R	-
	PREET 4549 - 45 HP	Diesel	75D31R	-
	PREET 5049 - 50 HP	Diesel	TRCT L 090	-
	PREET 6049 - 60 HP	Diesel	TRCT L 090	-
	PREET 6549 - 65 HP	Diesel	TRCT L 090	-
	PREET 7549 - 75 HP	Diesel	TRCT L 090	-
	PREET 9049 - 90 HP	Diesel	TRCT L 090	-
	PREET 955 - 55 HP	Diesel	TRCT L 090	-
Standard Corporation India Ltd.	Standard DI 124 (25 HP)	Diesel	75D31R	-
	Standard DI 235 (35 HP)	Diesel	75D31R	-
	Standard DI 335 (35 HP)	Diesel	75D31R	-
	Standard DI 345 (45 HP)	Diesel	75D31R	-
	Standard DI 355 (55 HP)	Diesel	TRCT L 090	-
	Standard DI 450 (50 HP)	Diesel	TRCT L 090	-
	Standard DI 460 (60 HP)	Diesel	TRCT L 105	-
	Standard DI 475 (75 HP)	Diesel	TRCT L 105	-
	Standard DI 490 (90 HP)	Diesel	TRCT L 105	-
TAFE (Tractors And Farm Equipments Ltd.)	MASSEY FERGUSON 1030 DI Mahashakti (30 HP)	Diesel	75D31R	-
	MASSEY FERGUSON 1035 DI (35 HP)	Diesel	75D31R	-
	MASSEY FERGUSON 1035 DI Mahashakti (39 HP)	Diesel	75D31R	-
	MASSEY FERGUSON 1035 DI Shakti (35 HP)	Diesel	75D31R	-



FITMENT CHART /// TRACTORS + AGRICULTURAL VEHICLES

NAME OF MANUFACTURER	VEHICLE MODEL	FUEL	AKIYO PART NO.	HITACHI PART NO.
TAFE (Tractors And Farm Equipments Ltd.)	MASSEY FERGUSON 1134 DI (35 HP)	Diesel	75D31R	-
	MASSEY FERGUSON 241 DI Mahaan (42 HP)	Diesel	75D31R	-
	MASSEY FERGUSON 241 DI Mahashakti (42 HP)	Diesel	75D31R	-
	MASSEY FERGUSON 241 DI Planetary Plus (42 HP)	Diesel	75D31R	-
	MASSEY FERGUSON 245 DI (50 HP)	Diesel	75D31R	-
	MASSEY FERGUSON 5245 DI 4WD (50 HP)	Diesel	75D31R	-
	MASSEY FERGUSON 5245 DI Maha Mahan (50 HP)	Diesel	75D31R	-
	MASSEY FERGUSON 5245 DI Planetary Plus (50 HP)	Diesel	75D31R	-
	MASSEY FERGUSON 7250 DI (47 HP)	Diesel	75D31R	-
	MASSEY FERGUSON 7250 DI POWER UP (50 HP)	Diesel	75D31R	-
	MASSEY FERGUSON 9000 (50 HP)	Diesel	75D31R	-
	MASSEY FERGUSON 9500 (58 HP)	Diesel	75D31R	-
	MASSEY FERGUSON 9500 4WD (58 HP)	Diesel	75D31R	-
	TAFE 1002 DI 4WD (100 HP)	Diesel	75D31R	-
	TAFE 241 DI (41-45 HP)	Diesel	75D31R	-
	TAFE 30 DI Orchard Plus (30 HP)	Diesel	75D31R	-
	TAFE 35 DI (36-40 HP)	Diesel	75D31R	-
	TAFE 45 DI (46-50 HP)	Diesel	75D31R	-
	TAFE 5450 DI (51-55 HP)	Diesel	75D31R	-
	TAFE 5900 DI 2WD (56-60 HP)	Diesel	75D31R	-
	TAFE 5900 DI 4WD (56-60 HP)	Diesel	75D31R	-
	TAFE 7502 DI 2WD (71-75 HP)	Diesel	75D31R	-
	TAFE 7502 DI 4WD (71-75 HP)	Diesel	75D31R	-
	TAFE 8502 DI 2WD (81-85 HP)	Diesel	75D31R	-
	TAFE 8502 DI 4WD (81-85 HP)	Diesel	75D31R	-
	TAFE 9502 DI 4WD (90 HP)	Diesel	75D31R	-
TAFE-TMTL (EICHER Tractor Corporation of India Pvt. Ltd.)	EICHER 241 DI (25 HP)	Diesel	TRCT L 090	-
	EICHER 241 XTRAC (25 HP)	Diesel	75D31R	-
	EICHER 242 DI (25 HP)	Diesel	TRCT L 090	-
	EICHER 242 XTRAC	Diesel	75D31R	-
	EICHER 312 SUPER DI (30 HP)	Diesel	75D31R	-
	EICHER 333 SUPER DI (33 HP)	Diesel	75D31R	-



FITMENT CHART /// TRACTORS + AGRICULCHURAL VEHICLES

NAME OF MANUFACTURER	VEHICLE MODEL	FUEL	AKIYO PART NO.	HITACHI PART NO.
TAFE-TMTL (EICHER Tractor Corporation of India Pvt. Ltd.)	EICHER 364 SUPER DI (35 HP)	Diesel	75D31R	-
	EICHER 368 SUPER DI (36 HP)	Diesel	75D31R	-
	EICHER 380 SUPER DI (38 HP)	Diesel	75D31R	-
	EICHER 480 SUPER DI (42 HP)	Diesel	75D31R	-
	EICHER 485 SUPER DI (45 HP)	Diesel	75D31R	-
	EICHER 548 (48 HP)	Diesel	TRCT L 090	-
	EICHER 551 (49 HP)	Diesel	TRCT L 090	-
	EICHER 557 (50 HP)	Diesel	TRCT L 090	-
	EICHER 5660 (50 HP)	Diesel	TRCT L 090	-
	EICHER 6100 VALTRA	Diesel	TRCT L 105	-
Titagarh Agrico Pvt. Ltd.	NGT 45-DI / 45 HP	Diesel	TRCT L 090	-
	NGT 50-DI / 50 HP	Diesel	TRCT L 090	-
	SUPER DI-39 / 45 HP	Diesel	TRCT L 090	-
	SUPER DI-45 / 45 HP	Diesel	TRCT L 090	-
	SUPER DI-50 / 50 HP	Diesel	TRCT L 090	-
VST Tillers & Tractors Ltd.	Mitsubishi Shakti MT 180D / 18.5 HP	Diesel	70D26L	65D26L / 90D26L
	VST Mitsubishi Shakti VT 224-1D / 22 HP	Diesel	70D26L	65D26L / 90D26L
	VST Mitsubishi Shakti VT 224-1D / AJAI-4WB / 22 HP	Diesel	70D26L	65D26L / 90D26L
	VST Shakti MT 171 DI / SAMRAT / 17 HP	Diesel	70D26L	65D26L / 90D26L
	VST Shakti MT 180D / JAI-2W / 18.5 HP	Diesel	70D26L	65D26L / 90D26L
	VST Shakti MT 270 / VIRAAAT 4W / 27 HP	Diesel	70D26L	65D26L / 90D26L
	VST Shakti MT 270 / VIRAAAT 4W Plus / 27 HP	Diesel	70D26L	65D26L / 90D26L

AKIYO



Rider Series



Classic Series



Prime Series



Dura Series



FITMENT CHART /// LCV + HCV + TRUCKS + BUSES

NAME OF MANUFACTURER	VEHICLE MODEL	FUEL	AKIYO PART NO.	HITACHI PART NO.
AMW Motors Ltd. / Asia Motor Works Ltd.	1618 TP (Tipper)	Diesel	135F51	N120
	2516 HL Cab (Truck) / 2516 HL Cowl (Truck)/Cowl 5.83 SWB	Diesel	135F51	N120
	2516 TP (Tipper)	Diesel	135F51	N120
	2518 HL Cab (Truck)	Diesel	135F51	N120
	2518 TP (Tipper)	Diesel	135F51	N120
	2518 TP Cowl	Diesel	135F51	N120
	2518 TP with Bell Crank	Diesel	135F51	N120
	2523 TP - Box Body	Diesel	135F51	N120
	2523 TP - Rock Body	Diesel	135F51	N120
	2528 TP (Tipper)	Diesel	135F51	N120
	3116 HL Cowl (Truck)	Diesel	135F51	N120
	3118 HL Cab (Truck)	Diesel	135F51	N120
Ashok Leyland Limited (Ashok Motors Limited)	3121 HIPPER TIPPER	Diesel	TRCT L 105	HQ N100L
	BEAVER	Diesel	135F51	N120
	BEAVER HAULAGE	Diesel	TRCT L 105	HQ N100L
	BISON	Diesel	95D31R	95D31R / 105D31R
	BISON HAULAGE	Diesel	TRCT L 105	HQ N100L
	BISON TIPPER (NEW)	Diesel	95D31R	95D31R / 105D31R
	BISON TIPPER (OLD)	Diesel	TRCT L 105	HQ N100L
	CARGO 759 / CARGO 909	Diesel	TRCT L 105	HQ N100L
	CARGO 759 TIPPER / CARGO 909 TIPPER	Diesel	TRCT L 105	HQ N100L
	CARGO 100.12	Diesel	TRCT L 105	HQ N100L
	CARGO 1512	Diesel	TRCT L 105	HQ N100L
	CARGO 1614 (NEW)	Diesel	95D31R	95D31R / 105D31R
	CARGO 1614 (OLD)	Diesel	TRCT L 105	HQ N100L
	CARGO 3516 / CARGO 4018	Diesel	TRCT L 105	-
	COMET (4X4)	Diesel	95D31R	95D31R / 105D31R
	COMET (4X4) TIPPER	Diesel	TRCT L 105	HQ N100L
	COMET 1611 (NEW)	Diesel	95D31R	95D31R / 105D31R
	COMET 1611 COWL & CHASSIS (NEW)	Diesel	95D31R	95D31R / 105D31R
	COMET 1611 COWL & CHASSIS (OLD)	Diesel	TRCT L105	HQ N100L
	COMET 1613 / COMET CG 1613 (NEW)	Diesel	95D31R	95D31R / 105D31R



FITMENT CHART /// LCV + HCV + TRUCKS + BUSES

NAME OF MANUFACTURER	VEHICLE MODEL	FUEL	AKIYO PART NO.	HITACHI PART NO.
Ashok Leyland Limited (Ashok Motors Limited)	COMET CG 1613 (OLD)	Diesel	TRCT L 105	HQ N100L
	COMET 3516 / 4018	Diesel	TRCT L 105	HQ N100L
	COMET GOLD (4X2)	Diesel	TRCT L 105	HQ N100L
	COMET SUPER 2518 (NEW)	Diesel	95D31R	95D31R / 105D31R
	COMET SUPER 2518 (OLD)	Diesel	TRCT L 105	HQ N100L
	E COMET 912 / E COMET 1112	Diesel	TRCT L 105	HQ N100L
	E COMET 1212 / E COMET 1213	Diesel	TRCT L 105	-
	HAULAGE 759 / HAULAGE 909 / HAULAGE 100.12	Diesel	TRCT L 105	HQ N100L
	HAULAGE CARGO 1614	Diesel	95D31R	95D31R / 105D31R
	HAULAGE COMET BISON / HAULAGE COMET 1611	Diesel	TRCT L 105	-
	HAULAGE COMET CG 1613 / SUPER 2518(4X4)	Diesel	TRCT L 105	-
	HAULAGE HIPPO	Diesel	135F51	N120
	HAULAGE TUSKER SUPER 1616	Diesel	TRCT L 105	-
	HIPPO	Diesel	95D31R	95D31R / 105D31R
	NGIC BOSS	Diesel	95D31R	95D31R / 105D31R
	TAURUS (6X2)-NEW / (6X4)-NEW / TUSKER SUPER 1616 - NEW	Diesel	95D31R	95D31R / 105D31R
	TAURUS (6X2)-OLD /(6X4) - OLD / TUSKER SUPER 1616 - OLD	Diesel	TRCT L 105	HQ N100L
	U-TRUCK - U3130 / U3518 / U4019 / U4923	Diesel	135F51	N120
	BUS SEGMENT - 8M UNISTEP	Diesel	135F51	N120
	BUS SEGMENT - 12M BUS HA57LE3	Diesel	200H52	N200
	BUS SEGMENT - CHEETAH AL / CHEETAH HINO	Diesel	165G51	N150
	BUS SEGMENT - CRUISER RE	Diesel	165G51	N150
	BUS SEGMENT - FPAG	Diesel	165G51	N150
	BUS SEGMENT - ICV STAG / LYNX	Diesel	165G51	N150
	BUS SEGMENT - LYNX	Diesel	165G51	N150
	BUS SEGMENT - PANTHER RE	Diesel	165G51	N150
	BUS SEGMENT - RESLF 6EE4	Diesel	165G51	N150
	BUS SEGMENT - STAG	Diesel	135F51	N120
	BUS SEGMENT - ULE DSL E4	Diesel	200H52	N200
	BUS SEGMENT - VESTIBULE	Diesel	165G51	N150
	BUS SEGMENT - VIKING AL / VIKING HINO / VIKING SUPER	Diesel	165G51	N150



FITMENT CHART /// LCV + HCV + TRUCKS + BUSES

NAME OF MANUFACTURER	VEHICLE MODEL	FUEL	AKIYO PART NO.	HITACHI PART NO.
Ashok Leyland Nissan	DOST 1.5LTR (NEW)	CNG	70D26R	65D26R / 90D26R
	DOST 1.5LTR (OLD)	Diesel	70D26R	65D26R / 90D26R
	MITR	Diesel	95D31R	95D31R / 105D31R
	PARTNER	Diesel	95D31R	95D31R / 105D31R
Bharat Benz (Daimler India Commercial Vehicles - DICV)	1617R (4X2)	Diesel	95D31R	95D31R
	2523R BSIV (6X2) HL / 2523R BSIV (6X4)	Diesel	135F51	N120
	3123R BSIV (8X2) HL	Diesel	135F51	N120
	3128 (8X4)	Diesel	135F51	N120
	3723R (10X2)	Diesel	TRCT L 105	HQ N100L
	MD 914R (4X2)	Diesel	95D31R	95D31R
	MD 1214RE (4X2)	Diesel	95D31R	95D31R
	MD IN-POWER 914R	Diesel	95D31R	95D31R
	MD IN-POWER 1214R	Diesel	95D31R	95D31R
	MD IN-POWER 1214RE	Diesel	95D31R	95D31R
	BUS SEGMENT - BB SCHOOL BUS	Diesel	95D31R	95D31R
	BUS SEGMENT - BB STAFF BUS	Diesel	95D31R	95D31R
	BUS SEGMENT - BB TOURIST BUS	Diesel	95D31R	95D31R
Daewoo Motors India Limited (Formerly known as DCM Toyota Limited)	CANTER	Diesel	95D31R	95D31R / 105D31R
	DYNA	Diesel	95D31R	95D31R / 105D31R
Eicher Motors Limited (VECE)	EICHER - LCV 10.50 / 10.59 / 10.60 / 10.70 / 10.75 / 10.90 (NEW)	Diesel	95D31R	95D31R / 105D31R
	EICHER - LCV 10.50 / 10.59 / 10.60 / 10.70 / 10.75 / 10.90 (OLD)	Diesel	95D31R	95D31R / 105D31R
	EICHER - MCV 11.10	Diesel	95D31R	95D31R / 105D31R
	EICHER HCV 20.15/20.16/30.25/33.25	Diesel	135F51	N120
	EICHER HCV 40.40	Diesel	165G51	N150
	EICHER TERRA 16 HDR	Diesel	135F51	N120
	EICHER TERRA 20 HDR	Diesel	200H52	N200
	HERCULES 36.31 (8X2) / MEGA 40.40 / BMTC	Diesel	135F51	N120
	BUS SEGMENT - 10.50 / 10.75 / 11.10H / 11.10K	Diesel	95D31R	95D31R / 105D31R
	BUS SEGMENT - 10.90K STAR LINE / 20.15 BUS	Diesel	135F51	N120
	BUS SEGMENT - RE SLS BUS	Diesel	200H52	N200



FITMENT CHART /// LCV + HCV + TRUCKS + BUSES

NAME OF MANUFACTURER	VEHICLE MODEL	FUEL	AKIYO PART NO.	HITACHI PART NO.
Force Motors Ltd.	TEMPO TRAVELER	Diesel	95D31R	95D31R / 105D31R
	TRAVELER AMBULANCE	Diesel	165G51	N150
	TRUMP 15	Diesel	95D31R	95D31R / 105D31R
	TRUMP 40	Diesel	95D31R	95D31R / 105D31R
	BUS SEGMENT - CITILINE MINI BUS	Diesel	TRCT L 105	HQ N100L
	BUS SEGMENT - TRAVELER SCHOOL BUS	Diesel	135F51	N120
HM (Hindustan Motors Limited)	RTV (4X4) / HM CKD TRUCK - HCV	Diesel	200H52	N200
	WINNER 1.5LTR	Diesel	95D31R	95D31R / 105D31R
	WINNER DAC	Diesel	95D31R	95D31R
	WINNER / WINNER 1.8LTR	CNG	60D26R / 70D26R	65D26R
M&M Ltd. (Mahindra Navistar Automotive Pvt. Ltd.)	DI3200 CRX - LCV	Diesel	70D26R	65D26R
	GIO 0.5T	Diesel	60D26R / 70D26R	65D26R
	LOAD KING - LCV / LOAD KING ZOOM - LCV	Diesel	70D26R	65D26R
	MAXXIMO 0.8	Diesel	60D26R / 70D26R	65D26R
	TMN 25T / MN 31T	Diesel	TRCT L 105	HQ N100L
	MN 40T / MN 49T	Diesel	TRCT L 105	HQ N100L
	TRUXO 25 / TRUXO 31 BULKER	Diesel	TRCT L 105	HQ N100L
	TORROW 40T / TORROW 49T / TORROW 259S BOGIE	Diesel	TRCT L 105	HQ N100L
	TOURISTER CRDE - LCV	Diesel	70D26R	65D26R
	XJ	Diesel	70D26R	65D26R
	BUS SEGMENT - LOAD KING CNG BUS	Diesel / CNG	95D31R	95D31R / 105D31R
	BUS SEGMENT - SHERPA T25 LOAD CARRIER BUS	Diesel / CNG	95D31R	95D31R
	BUS SEGMENT - SHERPA T33 LOAD CARRIER BUS	Diesel / CNG	95D31R	95D31R
	BUS SEGMENT - SHERPA T42 TR LOAD CARRIER BUS	Diesel / CNG	95D31R	95D31R
	BUS SEGMENT - T25 / T25 CNG BUSES	Diesel / CNG	95D31R	95D31R / 105D31R
	BUS SEGMENT - T33 LOAD CARRIER / T42 TR LOAD CARRIER	Diesel / CNG	95D31R	95D31R / 105D31R
	BUS SEGMENT - TOURISTER COSMO BUS	Diesel	TRCT L 105	HQ N100L
	BUS SEGMENT - TOURISTER CRDe BUS	Diesel	TRCT L 105	HQ N100L
	BUS SEGMENT - TOURISTER SCHOOL BUS	Diesel	TRCT L 105	HQ N100L
	BUS SEGMENT - TOURISTER T-15W	Diesel / CNG	95D31R	95D31R
	BUS SEGMENT - VIKRANTH	Diesel / CNG	95D31R	95D31R / 105D31R



FITMENT CHART /// LCV + HCV + TRUCKS + BUSES

NAME OF MANUFACTURER	VEHICLE MODEL	FUEL	AKIYO PART NO.	HITACHI PART NO.
Man Force Trucks Pvt. Ltd.	MAN CLA49L 28	Diesel	TRCT L 105	HQ N100L
	MAN CLA16L 180	Diesel	135F51	N120
	MAN CLA25L 180	Diesel	135F51	N120
	MAN CLA40L 180	Diesel	135F51	N120
Piaggio Vehicles Pvt. Ltd.	APE TRUCK 801	Diesel	70D26L	65D26L
	APE TRUCK SINGLE CYL / APE TRUCK 2 CYL	Diesel	DIN55L	DIN55L
	PORTER 600 / PORTER 1000	Diesel	60D26L / 70D26L	65D26L
SML ISUZU Limited (Earlier SWARAJ MAZDA LTD)	50 STD	Diesel	95D31R	95D31R
	ISUZU LT 134-C	Diesel / CNG	150G51 / 165G51	N150
	ISUZU NQR	Diesel / CNG	TRCT L 105	HQ N100L
	SWARAJ COSMO / SWARAJ DUAL CAB	Diesel	95D31R	95D31R
	SWARAJ LCV	Diesel / CNG	TRCT L 105	HQ N100L
	SWARAJ PREMIUM WT49ESA	Diesel	95D31R	95D31R
	SWARAJ PRESTIGE 50STD	Diesel	95D31R	95D31R
	SWARAJ PRESTIGE WT 490	Diesel	95D31R	95D31R
	SWARAJ SUPER ZT54	Diesel	95D31R	95D31R
	BUS SEGMENT - ISUZU SKS EXECUTIVE BUS	Diesel	150G51 / 165G51	N150
	BUS SEGMENT - SWARAJ SARTJ WV26-S	Diesel	95D31R	95D31R / 105D31R
Tata Motors Limited	809 / 909 / 1109	Diesel	TRCT L 105	HQ N100L
	ACE 0.75 TON	Diesel	40B20R	40B19R
	ACE 1.0 TON	Diesel	60D26L / 70D26L	65D26L
	IRIS	Diesel	70D26R / 70D26L	65D26R / 65D26L
	LCV LPT 407	Diesel	95D31R	95D31R / 105D31R
	LPT 709 E / SFC 709 E	Diesel	TRCT L 105	HQ N100L
	LPTA 713TC 32 BSII COWL / LPTA 713TC 32 BSII T-CAB	Diesel	200H52	N200
	LPTA 713TC 32 CAB LHD / LPTA 713TC 32 T-CAB	Diesel	200H52	N200
	LPTA 715TC 32 BSII T-CAB	Diesel	200H52	N200
	MAGIC	Diesel	40B20R	40B19R
	SUPER ACE	Diesel	70D26R	65D26R
	VENTURE 1.0T	Diesel	70D26R	65D26R
	ZIP	Diesel	70D26R / 70D26L	65D26R / 65D26L



FITMENT CHART /// LCV + HCV + TRUCKS + BUSES

NAME OF MANUFACTURER	VEHICLE MODEL	FUEL	AKIYO PART NO.	HITACHI PART NO.
Tata Motors Limited	8X2LP 1112 BS III	Diesel	TRCT L 105	HQ N100L
	LP 1512 TC / LP 1615 697 BSIII	Diesel / CNG	150G51 / 165G51	N150
	LPK 1618 BS II TIPPER 4X2 / LPK 1618 TC TRAILER MIXER	Diesel	150G51 / 165G51	N150
	LPK 2518TC 6X4 BS II TIPPER	Diesel / CNG	150G51 / 165G51	N150
	LPO 916TC / LPO 916TC RHD	Diesel / CNG	150G51 / 165G51	N150
	LPO 1316 LHD / LPO 1318 LHD / LPO 1318 TC BS II	Diesel	200H52	N200
	LPO 1510 WEBLER MODELL / LPO 1512	Diesel / CNG	150G51 / 165G51	N150
	LPS 2530 NOVUS	Diesel / CNG	150G51 / 165G51	N150
	LPS 4018TC 32 CAB BS II UP / LPS 4018TC 32 COWL BS II UP	Diesel	TRCT L 105	HQ N100L
	LPT 1313	Diesel	200H52	N200
	LPT 1518 TC BS II / LPT 1613 62 TC	Diesel / CNG	150G51 / 165G51	N150
	LPT 3118 TC BS II	Diesel	TRCT L 105	HQ N100L
	SD 1015TC 36 BS II CAB / 42 BS II CAB / 42 CAB LHD	Diesel	200H52	N200
	TATA 1623 BS II	Diesel / CNG	150G51 / 165G51	N150
	TATA DEF LPT 1615 TC / TATA DEF LPTA 1212 TC	Diesel	150G51 / 165G51	N150
	TATA DEF LPTA 1621 TC / TATA DEF SD 1015 TC	Diesel	150G51 / 165G51	N150
	TATA DEFENCE VEHICLE LP407	Diesel	95D31R	95D31R / 105D31R
	TATA LPO 1616 TC / TATA TRUCK LPO 1613 TC	Diesel / CNG	150G51 / 165G51	N150
	TATA TIPPER LPK 1615 TC / TATA TIPPER LPK 2516 TC	Diesel	150G51 / 165G51	N150
	TATA TIPPER SK 1615 TC	Diesel	150G51 / 165G51	N150
	TATA TRUCK LPT 1613 / TATA TRUCK LPT 1613 TC ABS	Diesel / CNG	150G51 / 165G51	N150
	TATA TRUCK LPT 1615 TC	Diesel / CNG	150G51 / 165G51	N150
	TATA TRUCK LPT 2515 TC EX BS II	Diesel / CNG	150G51 / 165G51	N150
	TATA TRUCK LPT 2516 TC	Diesel / CNG	150G51 / 165G51	N150
	TATA TRUCK SE 1613 TC	Diesel / CNG	150G51 / 165G51	N150
	TATA TRUCK TRACTOR LPS 3015 TC	Diesel	150G51 / 165G51	N150
	TATA TRUCK TRACTOR LPS 3516 TC	Diesel	150G51 / 165G51	N150
	TATA TRUCK TRACTOR LPS 4018 TC	Diesel	150G51 / 165G51	N150
	TATA TRUCK TRACTOR LPS 4021 TC	Diesel	150G51 / 165G51	N150
	BUS SEGMENT - 59 BSII RE / 62LE	Diesel / CNG	150G51 / 165G51	N150
	BUS SEGMENT - LP 1510 59 CMVR BS II	Diesel / CNG	150G51 / 165G51	N150
	BUS SEGMENT - LPO 1510 BS II / TATA BUS LPO 1510 CNG	Diesel / CNG	150G51 / 165G51	N150



FITMENT CHART /// LCV + HCV + TRUCKS + BUSES

NAME OF MANUFACTURER	VEHICLE MODEL	FUEL	AKIYO PART NO.	HITACHI PART NO.
Tata Motors Limited	BUS SEGMENT - LPO 1512 TC ARMY BS II / LPO 1512 TC BS II	Diesel / CNG	150G51 / 165G51	N150
	BUS SEGMENT - LPO 1615	Diesel / CNG	150G51 / 165G51	N150
	BUS SEGMENT - MARCOPOLO BUS LPO 1612	Diesel / CNG	150G51 / 165G51	N150
	BUS SEGMENT - MARCOPOLO STAR BUS	Diesel / CNG	150G51 / 165G51	N150
	BUS SEGMENT - TATA BUS LP / TATA BUS LP 709 E	Diesel / CNG	150G51 / 165G51	N150
	BUS SEGMENT - TATA BUS LPO 1610 TC	Diesel / CNG	200H52	N200
Ural India Limited	16PM	Diesel	150G51 / 165G51	N150
	16RT	Diesel	150G51 / 165G51	N150
	U637 TIPPER	Diesel	150G51 / 165G51	N150
	UF10B	Diesel	200H52	N200
	UF11B (FE)	Diesel	200H52	N200
	UF16 (4X2) CARGO TRUCK	Diesel	TRCT L 105	HQ N100L
	UR11BL	Diesel	200H52	N200
	BUS SEGMENT - UF 11R(RE) BUS	Diesel	200H52	N200
Ve Commercial Vehicles Ltd (VECE - EICHER MOTORS)	EICHER - LCV 10.50 / 10.59 / 10.60 / 10.70 / 10.75 / 10.90 (NEW)	Diesel	95D31R	95D31R / 105D31R
	EICHER - LCV 10.50 / 10.59 / 10.60 / 10.70 / 10.75 / 10.90 (OLD)	Diesel	95D31R	95D31R / 105D31R
	EICHER - MCV 11.10	Diesel	95D31R	95D31R / 105D31R
	EICHER HCV 20.15/20.16/30.25/33.25	Diesel	135F51	N120
	EICHER HCV 40.40	Diesel	165G51	N150
	EICHER TERRA 16 HDR	Diesel	135F51	N120
	EICHER TERRA 20 HDR	Diesel	200H52	N200
	HERCULES 36.31 (8X2) / MEGA 40.40 / BMTG	Diesel	135F51	N120
	BUS SEGMENT - 10.50 / 10.75 / 11.10H / 11.10K	Diesel	95D31R	95D31R / 105D31R
	BUS SEGMENT - 10.90K STAR LINE / 20.15 BUS	Diesel	135F51	N120
	BUS SEGMENT - RE SLS BUS	Diesel	200H52	N200

Hitachi Battery



HS Series



HP Series



DIN Series



CV Series





FITMENT CHART - (SPV) + CONSTRUCTION & EARTH MOVING VEHICLES

NAME OF MANUFACTURER	VEHICLE MODEL	FUEL	AKIYO PART NO.	HITACHI PART NO.
ACE / Action Construction Equipment Ltd.	12XW (Mobile Crane)	Diesel	TRCT L 105	HQ N100L
	14XW (Mobile Crane)	Diesel	95D31R	95D31R
	15XWE (Mobile Crane)	Diesel	TRCT L 105	HQ N100L
	15XWF (Mobile Crane)	Diesel	95D31R	95D31R
	18XW (Mobile Crane)	Diesel	95D31R	95D31R
	20XW (Mobile Crane)	Diesel	95D31R	95D31R
	ADD 100 (Vibratory Roller / Tandem Roller)	Diesel	135F51	N120
	ADD 35 (Vibratory Roller / Tandem Roller)	Diesel	95D31R	95D31R
	ADD 90 (Vibratory Roller / Tandem Roller)	Diesel	135F51	N120
	AF 15D (Forklift Truck)	Diesel	95D31R	95D31R
	AF 30D (Forklift Truck)	Diesel	95D31R	95D31R
	AF 50D (Forklift Truck)	Diesel	95D31R	95D31R
	AG 165 (Motor Graders)	Diesel	135F51	N120
	ALN 300 (Loader)	Diesel	135F51	N120
	ALN 500 (Loader)	Diesel	135F51	N120
	ASD 110 Soil Compactor (Vibratory Roller)	Diesel	135F51	N120
	ASD 125 Soil Compactor (Vibratory Roller)	Diesel	135F51	N120
	ASD 156 Soil Compactor (Vibratory Roller)	Diesel	135F51	N120
	AX 130 (Backhoe)	Diesel	135F51	N120
	B Loader	Diesel	135F51	N120
	Crawler Cranes / ACX 400 / ACX 750	Diesel	TRCT L 105	HQ N100L
	FX 150 (Mobile Crane)	Diesel	TRCT L 105	HQ N100L
	Mini Rollers	Diesel	135F51	N120
	Pick & Move Crane	Diesel	TRCT L 105	HQ N100L
	Rhino 90C (Mobile Crane)	Diesel	TRCT L 105	HQ N100L
	Rollers	Diesel	135F51	N120
	TM 140 (Truck Mounted Crane)	Diesel	95D31R	95D31R
	TM 250 (Truck Mounted Crane)	Diesel	95D31R	95D31R
	TM 400 (Truck Mounted Crane)	Diesel	95D31R	95D31R
	Tower Cranes	Diesel	TRCT L 105	HQ N100L
	Truck Mounted Crane	Diesel	TRCT L 105	HQ N100L



FITMENT CHART - (SPV) + CONSTRUCTION & EARTH MOVING VEHICLES

NAME OF MANUFACTURER	VEHICLE MODEL	FUEL	AKIYO PART NO.	HITACHI PART NO.
JCB - India (J.C. Bamford Excavators Limited)	Backhoe Loader - 2DX	Diesel	TRCT L 105	HQ N100L
	Backhoe Loader - 3DX ecoXcellence	Diesel	135F51	N120
	Backhoe Loader - 3DX Super ecoXcellence	Diesel	135F51	N120
	Backhoe Loader - 3DX Xtra ecoXcellence	Diesel	135F51	N120
	Backhoe Loader - 4DX ecoXcellence	Diesel	135F51	N120
	Lift All Crane - 3DXL - 1202	Diesel	TRCT L 105	HQ N100L
	Lift All Crane - 3DXL - 1253	Diesel	TRCT L 105	HQ N100L
	Lift All Crane - 3DXL - 1553	Diesel	TRCT L 105	HQ N100L
	Lift All Crane - P99 - 1253	Diesel	TRCT L 090	N100L
	Skid Steer Loader - Robot 135	Diesel	TRCT L 105	HQ N100L
	Skid Steer Loader - Robot 155	Diesel	TRCT L 105	HQ N100L
	Soil Compactor - JCB116	Diesel	135F51	N120
	Soil Compactor - VM115	Diesel	135F51	N120
	Telescopic Handler 530-110	Diesel	TRCT L 105	HQ N100L
	Telescopic Handler 530-70	Diesel	TRCT L 105	HQ N100L
	Telescopic Handler 531-140	Diesel	TRCT L 105	HQ N100L
	Telescopic Handler 531-70	Diesel	TRCT L 105	HQ N100L
	Telescopic Handler 535-I25-HI-VIZ	Diesel	TRCT L 105	HQ N100L
	Telescopic Handler 540-140 HI-VIZ	Diesel	TRCT L 105	HQ N100L
	Telescopic Handler 540-170	Diesel	TRCT L 105	HQ N100L
	Tracked Excavator - 1553	Diesel	TRCT L 105	HQ N100L
	Tracked Excavator - 4302	Diesel	TRCT L 105	HQ N100L
	Tracked Excavator - 432ZDXL	Diesel	TRCT L 105	HQ N100L
	Tracked Excavator - JS120	Diesel	135F51	N120
	Tracked Excavator - JS1300	Diesel	TRCT L 105	HQ N100L
	Tracked Excavator - JS140	Diesel	TRCT L 105	HQ N100L
	Tracked Excavator - JS200	Diesel	TRCT L 105	HQ N100L
	Tracked Excavator - JS200HD	Diesel	135F51	N120
	Tracked Excavator - JS205LC	Diesel	135F51	N120
	Tracked Excavator - JS210LC.4D	Diesel	135F51	N120
	Tracked Excavator - JS330	Diesel	TRCT L 105	HQ N100L
	Tracked Excavator - JS80	Diesel	TRCT L 105	HQ N100L



FITMENT CHART - (SPV) + CONSTRUCTION & EARTH MOVING VEHICLES

NAME OF MANUFACTURER	VEHICLE MODEL	FUEL	AKIYO PART NO.	HITACHI PART NO.
JCB - India (J.C. Bamford Excavators Limited)	Tracked Excavator - JS81	Diesel	TRCT L 105	HQ N100L
	Vibratory Tandem Roller - VMT330 (Mini)	Diesel	135F51	N120
	Vibratory Tandem Roller - VMT860	Diesel	135F51	N120
	Wheeled Loaders - 3DXL	Diesel	TRCT L 105	HQ N100L
	Wheeled Loaders - 430ZX	Diesel	TRCT L 105	HQ N100L
	Wheeled Loaders - 430ZX PLUS	Diesel	TRCT L 105	HQ N100L
	Wheeled Loaders - 432ZX	Diesel	TRCT L 105	HQ N100L
	Wheeled Loaders - 455ZX	Diesel	TRCT L 105	HQ N100L

AKIYO

Hitachi Battery



Rider Series



Classic Series



Prime Series



Dura Series



HS Series



HP Series



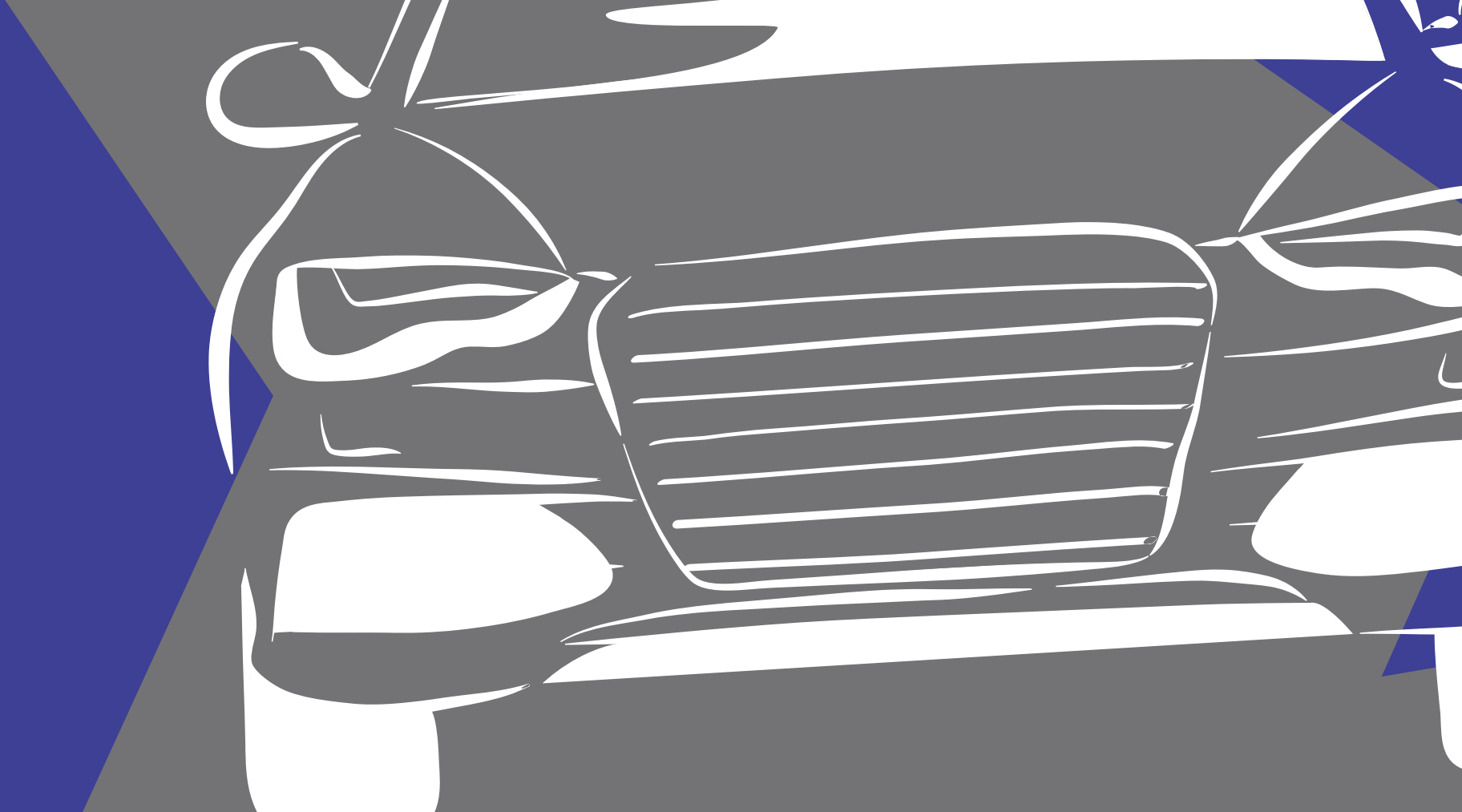
DIN Series



CV Series







Alf Technologies (India) Pvt. Ltd.

1101, Titanium One, Next to Rajpath Club, Pakwan Cross Road
S.G. Highway, Bodakdev, Ahmedabad.-380 054, Gujarat, INDIA

CALL US NOW !
+91 8155-888-555

Follow Us



www.alfworld.com